

# Anti-CRELD1 antibody



Catalog Number: 104031

## Product name

Anti-CRELD1 antibody

## Immunogen

[Human CRELD1 \(His Tag\) recombinant protein](#)

## Specificity

Human CRELD1

## Antibody description

Rabbit polyclonal to CRELD1

## Preparation

Produced in rabbits immunized with purified, recombinant Human CRELD1 (rh CRELD1; NP\_001070883.1; Met1-Glu362). CRELD1 specific IgG was purified by Human CRELD1 affinity chromatography.

## Formulation

0.2 µm filtered solution in PBS with 5% trehalose

## Storage

This antibody can be stored at 2°C-8°C for one month without detectable loss of activity. Antibody products are stable for twelve months from date of receipt when stored at -20°C to -80°C.

Preservative-Free.

Sodium azide is recommended to avoid contamination (final concentration 0.05%-0.1%). It is toxic to cells and should be disposed of properly. Avoid repeated freeze-thaw cycles.

## Clonality

Polyclonal

## Ig Type

Rabbit IgG

## Applications

ELISA, IHC-P

## Dilutions

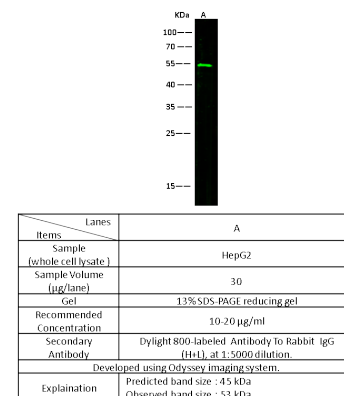
WB: 10-20 µg/ml

ELISA: 0.1-0.2 µg/mL

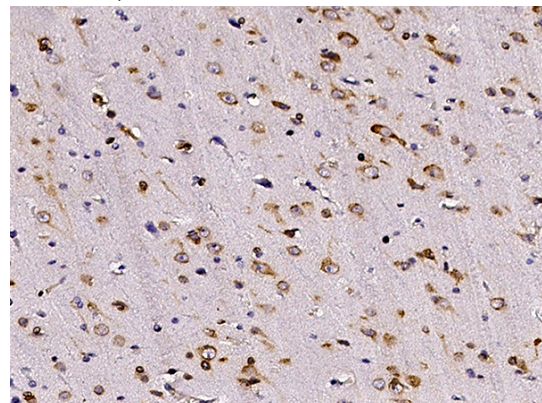
This antibody can be used at 0.1-0.2 µg/mL with the appropriate secondary reagents to detect Human CRELD1. The detection limit for Human CRELD1 is < 0.039 ng/well.

IHC-P: 0.1-2 µg/ml

## Validations



CRELD1 Antibody, Rabbit PAb, Antigen Affinity Purified, Western blot



CRELD1 Antibody, Rabbit PAb, Antigen Affinity Purified, Immunohistochemistry

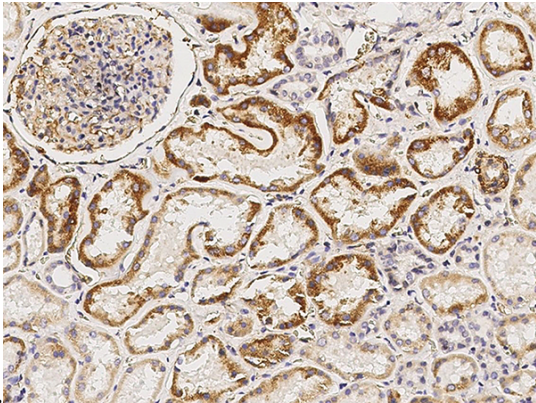
Immunochemical staining of human CRELD1 in human brain with rabbit polyclonal antibody (1 µg/mL, formalin-fixed paraffin embedded

# Anti-CRELD1 antibody



Catalog Number: 104031

---



CRELD1 Antibody, Rabbit PAb, Antigen Affinity Purified, Immunohistochemistry

Immunochemical staining of human CRELD1 in human kidney with rabbit polyclonal antibody (1  $\mu\text{g}/\text{mL}$ , formalin-fixed paraffin embedded sections).

sections).