

Anti-FKBP7 / Rotamase antibody



Catalog Number: 103913

Product name

Anti-FKBP7 / Rotamase antibody

Immunogen

[Human FKBP7 / Rotamase \(His Tag\) recombinant protein](#)

Specificity

Human FKBP7 / Rotamase

Antibody description

Rabbit polyclonal to FKBP7 / Rotamase

Preparation

Produced in rabbits immunized with purified, recombinant Human FKBP7 / Rotamase (rh FKBP7 / Rotamase; Q9Y680-2; Met1-Gln218). FKBP7 / Rotamase specific IgG was purified by Human FKBP7 / Rotamase affinity chromatography.

Formulation

0.2 µm filtered solution in PBS

Storage

This antibody can be stored at 2°C-8°C for one month without detectable loss of activity. Antibody products are stable for twelve months from date of receipt when stored at -20°C to -80°C.

Preservative-Free.

Sodium azide is recommended to avoid contamination (final concentration 0.05%-0.1%). It is toxic to cells and should be disposed of properly. Avoid repeated freeze-thaw cycles.

Clonality

Polyclonal

Ig Type

Rabbit IgG

Applications

ELISA, WB, IP

Dilutions

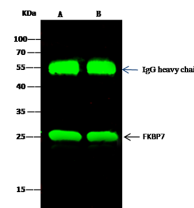
WB: 5-10 µg/mL

ELISA: 0.1-0.2 µg/mL

This antibody can be used at 0.1-0.2 µg/mL with the appropriate secondary reagents to detect Human FKBP7 / Rotamase. The detection limit for Human FKBP7 / Rotamase is < 0.039 ng/well.

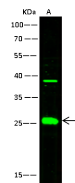
IP: 1-4 µg/mg of lysate

Validations



Items	Lanes	A	B
Sample (whole cell lysate)		HepG2	293T
Sample quantity		0.5 mg	
IP antibody quantity		2 µg	
Protein G agarose		15 µl of 50% Protein G Agarose	
Gel		13% SDS-PAGE reducing gel	
Primary antibody		FKBP7 His antibody at 5 µg/ml	
Secondary antibody		DyLight 800-labeled antibody to rabbit IgG (H+L), at 1:5000 dilution	

FKBP7 / Rotamase Antibody, Rabbit PAb, Antigen Affinity Purified, Immunoprecipitation



Items	Lanes	A
Sample (whole cell lysate)		HepG2
Sample Volume (µg/lane)		30
Gel		13% SDS-PAGE reducing gel
Recommended Concentration		5-10 µg/ml
Secondary Antibody		DyLight 800-labeled Antibody to Rabbit IgG (H+L), at 1:5000 dilution
Explanation		Developed using Odyssey imaging system. Predicted band size : 26 kDa Observed band size : 26 kDa Additional bands at : 38 kDa (We are unsure as to the identity of these extra bands. They are possible non-specific bindings).

FKBP7 / Rotamase Antibody, Rabbit PAb, Antigen Affinity Purified, Western blot