

# Anti-CCN3 / NOV (IGFBP9) antibody



Catalog Number: 103821

## Product name

Anti-CCN3 / NOV (IGFBP9) antibody

## Immunogen

[Human CCN3 / NOV \(IGFBP9\) \(His Tag\) recombinant protein](#)

## Specificity

Human CCN3 / NOV / IGFBP9

## Antibody description

Rabbit polyclonal to CCN3 / NOV (IGFBP9)

## Preparation

Produced in rabbits immunized with purified, recombinant Human CCN3 / NOV / IGFBP9 (rh CCN3 / NOV / IGFBP9; NP\_002505.1; Met 1-Met 357). CCN3 / NOV / IGFBP9 specific IgG was purified by Human CCN3 / NOV / IGFBP9 affinity chromatography.

## Formulation

0.2 µm filtered solution in PBS with 5% trehalose

## Storage

This antibody can be stored at 2°C-8°C for one month without detectable loss of activity. Antibody products are stable for twelve months from date of receipt when stored at -20°C to -80°C.

Preservative-Free.

Sodium azide is recommended to avoid contamination (final concentration 0.05%-0.1%). It is toxic to cells and should be disposed of properly. Avoid repeated freeze-thaw cycles.

## Clonality

Polyclonal

## Ig Type

Rabbit IgG

## Applications

ELISA, WB, IHC-P

## Dilutions

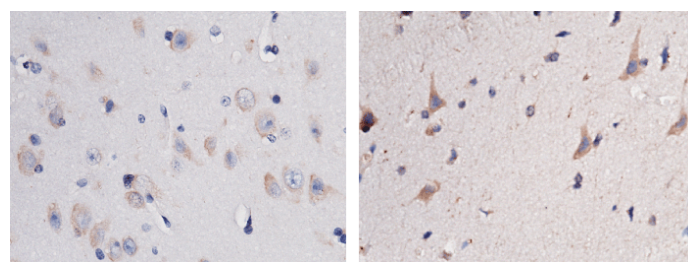
WB: 10-20 µg/mL

ELISA: 0.1-0.2 µg/mL

This antibody can be used at 0.1-0.2 µg/mL with the appropriate secondary reagents to detect Human NOV. The detection limit for Human NOV is approximately 0.00245 ng/well.

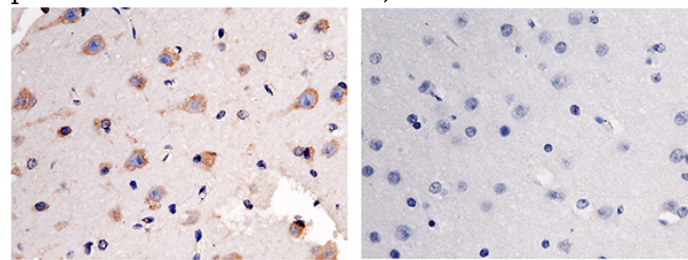
IHC-P: 2-5 µg/mL

## Validations



CCN3 / NOV / IGFBP9 Antibody, Rabbit PAb, Antigen Affinity Purified, Immunohistochemistry

Immunochemical staining of human NOV in human brain (from 2 donors) with rabbit polyclonal antibody (2 µg/mL, formalin-fixed paraffin embedded sections).



NOV Antibody +  
NOV Antigen -

+  
+

CCN3 / NOV / IGFBP9 Antibody, Rabbit PAb, Antigen Affinity Purified, Immunohistochemistry

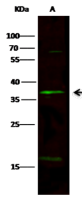
Immunochemical staining of human NOV in human brain with rabbit polyclonal antibody (2 µg/mL, formalin-fixed paraffin embedded

# Anti-CCN3 / NOV (IGFBP9) antibody



Catalog Number: 103821

sections). The left panel: tissue incubated with primary antibody; The right panel: tissue incubated with the mixture of primary antibody and antigen (recombinant protein).



Items	Lanes	A
Sample (whole cell lysate)		R562
Sample Volume ( $\mu$ g/lane)		30
Gel		13% SDS-PAGE reducing gel
Recommended Concentration		10-20 $\mu$ g/ml
Secondary Antibody		Dylight 800 labeled Antibody To Rabbit IgG (H+L), at 1:5000 dilution.

CCN3 / NOV / IGFBP9 Antibody, Rabbit PAb, Antigen Affinity Purified, Western blot