

# Anti-LRPAP1 antibody



Catalog Number: 103753

## Product name

Anti-LRPAP1 antibody

## Immunogen

[Mouse LRPAP1 \(His Tag\) recombinant protein](#)

## Specificity

Mouse LRPAP1  
**No cross-reactivity** in ELISA with Human LRPAP1

## Antibody description

Rabbit monoclonal to LRPAP1

## Preparation

This antibody was obtained from a rabbit immunized with purified, recombinant Mouse LRPAP1 (rM LRPAP1; NP\_038615.2; Gln 29-Leu 360).

## Formulation

0.2 µm filtered solution in PBS with 5% trehalose

## Storage

This antibody can be stored at 2°C-8°C for one month without detectable loss of activity. Antibody products are stable for twelve months from date of receipt when stored at -20°C to -80°C. Preservative-Free.

Sodium azide is recommended to avoid contamination (final concentration 0.05%-0.1%). It is toxic to cells and should be disposed of properly. Avoid repeated freeze-thaw cycles.

## Clonality

Monoclonal

## Ig Type

Rabbit IgG

## Applications

ELISA, WB, IHC-P, IP

## Dilutions

WB: 10-20 µg/mL

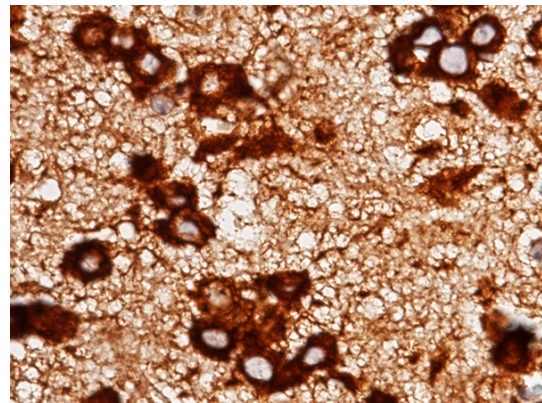
ELISA: 0.1-0.2 µg/mL

This antibody can be used at 0.1-0.2 µg/mL with the appropriate secondary reagents to detect Mouse LRPAP1. The detection limit for Mouse LRPAP1 is approximately 0.00975 ng/well.

IHC-P: 0.5-5 µg/mL

IP: 1-4 µg/mg of lysate

## Validations

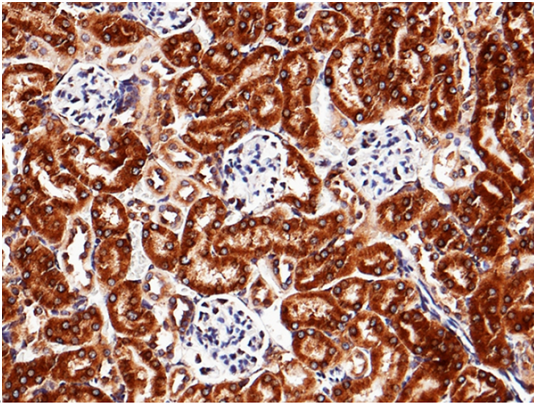


LRPAP1 Antibody, Rabbit MAb, Immunohistochemistry

Immunochemical staining of mouse LRPAP1 in mouse brain with rabbit monoclonal antibody (5 µg/mL, formalin-fixed paraffin embedded sections). The image showing staining of nerve

# Anti-LRPAP1 antibody

Catalog Number: 103753

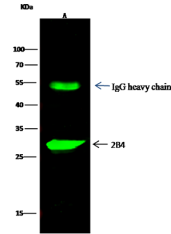


cells.

LRPAP1 Antibody, Rabbit MAb,  
Immunohistochemistry

Immunochemical staining of mouse LRPAP1 in  
mouse brain with rabbit monoclonal antibody (5

µg/mL, formalin-fixed paraffin embedded  
sections). The image showing staining of nephric



Items	Lanes	A
Sample (wholecell lysate)		Daudi
Sample quantity		0.5 mg
IP antibody quantity		2 µg
Protein G agarose		15 µl of 50% Protein G Agarose
Gel		13% SDS-PAGE reducing gel
Primary antibody		284 antibody at 5 µg/ml [Cat# 10042-R025]
Secondary antibody		DyLight 800-labeled antibody to rabbit IgG (H+L), at 1:5000 dilution.

tubule.

LRPAP1 Antibody, Rabbit MAb,  
Immunoprecipitation