

# Anti-LRPAP1 antibody



Catalog Number: 103590

## Product name

Anti-LRPAP1 antibody

## Immunogen

[Mouse LRPAP1 \(His Tag\) recombinant protein](#)

## Specificity

Mouse Acetylcholinesterase / ACHE

## Antibody description

Rabbit polyclonal to LRPAP1

## Preparation

Produced in rabbits immunized with purified, recombinant Mouse Acetylcholinesterase / ACHE (rM Acetylcholinesterase / ACHE; NP\_033729.1; Met 1-Leu 614). Acetylcholinesterase / ACHE specific IgG was purified by Mouse Acetylcholinesterase / ACHE affinity chromatography.

## Formulation

0.2 µm filtered solution in PBS with 5% trehalose

## Storage

This antibody can be stored at 2°C-8°C for one month without detectable loss of activity. Antibody products are stable for twelve months from date of receipt when stored at -20°C to -80°C.

Preservative-Free.

Sodium azide is recommended to avoid contamination (final concentration 0.05%-0.1%). It is toxic to cells and should be disposed of properly. Avoid repeated freeze-thaw cycles.

## Clonality

Polyclonal

## Ig Type

Rabbit IgG

## Applications

ELISA, WB, IHC-P, IP

## Dilutions

WB: 0.5-10 µg/mL

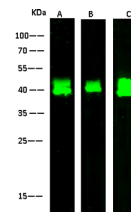
ELISA: 0.1-0.2 µg/mL

This antibody can be used at 0.1-0.2 µg/mL with the appropriate secondary reagents to detect Mouse ACHE. The detection limit for Mouse ACHE is approximately 0.00975 ng/well.

IHC-P: 0.1-2 µg/mL

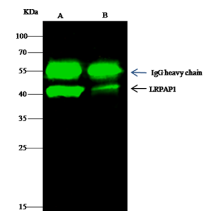
IP: 0.5-2 µg/mg of lysate

## Validations



Items	Lanes	A	B	C
Sample (whole cell lysate)		293T	U87MG	PC3
Sample Volume (µg/lane)		30	30	30
Gel	13% SDS-PAGE reducing gel			
Recommended Concentration	0.5-10 µg/ml			
Secondary Antibody	Dylight 800-labeled Antibody To Rabbit IgG (H+L), at 1:5000 dilution			
Developed using Odyssey imaging system.				
Explanation	Predicted band size : 42 kDa Observed band size : 42 kDa			

## LRPAP1 Antibody, Rabbit PAb, Antigen Affinity



Items	Lanes	A	B
Sample (whole cell lysate)		293T	U87MG
Sample quantity	0.5 µg		
IP antibody quantity	2 µg		
Protein Agarose	15 µl of 50% Protein G Agarose		
Gel	13% SDS-PAGE reducing gel		
Primary antibody	mLRPAP1 antibody at 10 µg/ml		
Secondary antibody	Dylight 800-labeled antibody to rabbit IgG (H+L), at 1:5000 dilution		

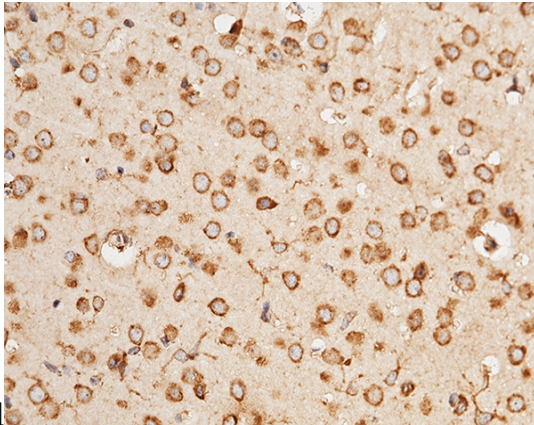
Purified, Western blot

LRPAP1 Antibody, Rabbit PAb, Antigen Affinity

# Anti-LRPAP1 antibody

Catalog Number: 103590

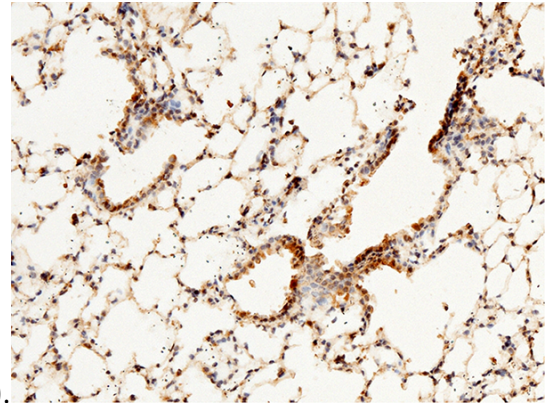
---



Purified

LRPAP1 Antibody, Rabbit PAb, Antigen Affinity Purified, Immunohistochemistry

Immunochemical staining of mouse LRPAP1 in mouse brain with rabbit polyclonal antibody (1  $\mu\text{g}/\text{mL}$ , formalin-fixed paraffin embedded



sections).

LRPAP1 Antibody, Rabbit PAb, Antigen Affinity Purified, Immunohistochemistry

Immunochemical staining of mouse LRPAP1 in mouse lung with rabbit polyclonal antibody (1  $\mu\text{g}/\text{mL}$ , formalin-fixed paraffin embedded sections).