

Anti-Syndecan-1/SDC1/CD138 antibody



Catalog Number: 103394

Product name

Anti-Syndecan-1/SDC1/CD138 antibody

Immunogen

[Mouse Syndecan-1/SDC1/CD138 \(His Tag\) recombinant protein](#)

Specificity

Mouse Syndecan-1 / SDC1 / CD138

Antibody description

Rabbit polyclonal to Syndecan-1/SDC1/CD138

Preparation

Produced in rabbits immunized with purified, recombinant Mouse Syndecan-1 / SDC1 / CD138 (rM Syndecan-1 / SDC1 / CD138; NP_035649.1; Met 1-Glu 252). Syndecan-1 / SDC1 / CD138 specific IgG was purified by Mouse Syndecan-1 / SDC1 / CD138 affinity chromatography.

Formulation

0.2 μ m filtered solution in PBS with 5% trehalose

Storage

This antibody can be stored at 2°C-8°C for one month without detectable loss of activity. Antibody products are stable for twelve months from date of receipt when stored at -20°C to -80°C.

Preservative-Free.

Sodium azide is recommended to avoid contamination (final concentration 0.05%-0.1%). It is toxic to cells and should be disposed of properly. Avoid repeated freeze-thaw cycles.

Clonality

Polyclonal

Ig Type

Rabbit IgG

Applications

ELISA, IHC-P

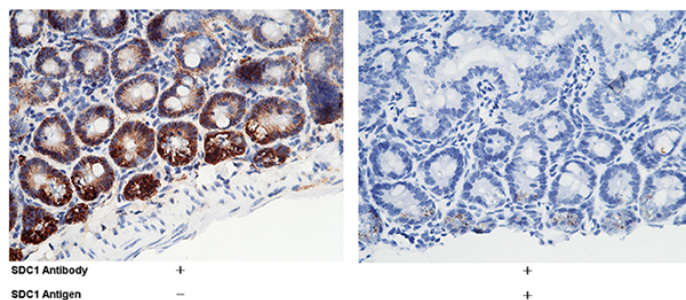
Dilutions

ELISA: 0.1-0.2 μ g/mL

This antibody can be used at 0.1-0.2 μ g/mL with the appropriate secondary reagents to detect Mouse SDC1. The detection limit for Mouse SDC1 is approximately 0.039 ng/well.

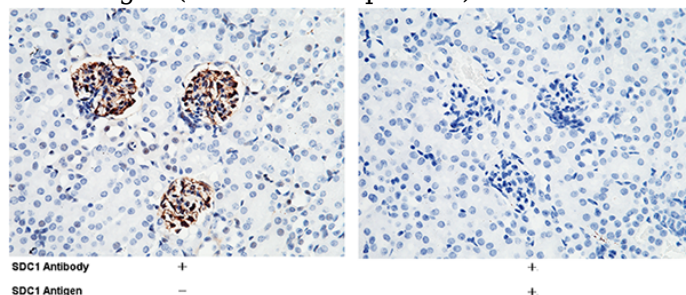
IHC-P: 0.1-2 μ g/mL

Validations



Syndecan-1 / SDC1 / CD138 Antibody, Rabbit PAb, Antigen Affinity Purified, Immunohistochemistry

Immunochemical staining of mouse SDC1 in mouse intestine with rabbit polyclonal antibody (1 μ g/mL, formalin-fixed paraffin embedded sections). The left panel: tissue incubated with primary antibody; The right panel: tissue incubated with the mixture of primary antibody and antigen (recombinant protein).



Syndecan-1 / SDC1 / CD138 Antibody, Rabbit PAb, Antigen Affinity Purified, Immunohistochemistry

Immunochemical staining of mouse SDC1 in

Anti-Syndecan-1/SDC1/CD138 antibody



Catalog Number: 103394

mouse kidney with rabbit polyclonal antibody (1 µg/mL, formalin-fixed paraffin embedded sections). The left panel: tissue incubated with

primary antibody; The right panel: tissue incubated with the mixture of primary antibody and antigen (recombinant protein).