

# Anti-SULT2A1 antibody



Catalog Number: 103369

## Product name

Anti-SULT2A1 antibody

## Immunogen

[Human SULT2A1 \(His Tag\) recombinant protein](#)

## Specificity

Human SULT2A1

## Antibody description

Rabbit polyclonal to SULT2A1

## Preparation

Produced in rabbits immunized with purified, recombinant Human SULT2A1 (rh SULT2A1; NP\_003158.2; Ser 2-Glu 285). SULT2A1 specific IgG was purified by Human SULT2A1 affinity chromatography.

## Formulation

0.2 µm filtered solution in PBS with 5% trehalose

## Storage

This antibody can be stored at 2°C-8°C for one month without detectable loss of activity. Antibody products are stable for twelve months from date of receipt when stored at -20°C to -80°C.

Preservative-Free.

Sodium azide is recommended to avoid contamination (final concentration 0.05%-0.1%). It is toxic to cells and should be disposed of properly. Avoid repeated freeze-thaw cycles.

## Clonality

Polyclonal

## Ig Type

Rabbit IgG

## Applications

ELISA, WB

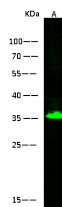
## Dilutions

WB: 10-20 µg/mL

ELISA: 0.1-0.2 µg/mL

This antibody can be used at 0.1-0.2 µg/mL with the appropriate secondary reagents to detect Human SULT2A1. The detection limit for Human SULT2A1 is approximately 0.00975 ng/well.

## Validations



Lanes	A
Sample (whole cell lysate)	HepG2
Sample Volume (µg/lane)	30
Gel	13% SDS-PAGE reducing gel
Recommended Concentration	2-10 µg/ml
Secondary Antibody	DyLight 800-labeled Antibody to Rabbit IgG (H+), at 1:5000 dilution.
Developed	using Odyssey imaging system.
Explanation	Predicted band size: 34 kDa Observed band size: 35 kDa

SULT2A1 Antibody, Rabbit PAb, Antigen Affinity Purified, Western blot