

# Anti-GPA33 antibody



Catalog Number: 103329

## Product name

Anti-GPA33 antibody

## Immunogen

[Human GPA33 \(His Tag\) recombinant protein](#)

## Specificity

Human GPA33

## Antibody description

Rabbit polyclonal to GPA33

## Preparation

Produced in rabbits immunized with purified, recombinant Human GPA33 (rh GPA33; Q99795-1; Met 1-Val 235). GPA33 specific IgG was purified by Human GPA33 affinity chromatography.

## Formulation

0.2 µm filtered solution in PBS with 5% trehalose

## Storage

This antibody can be stored at 2°C-8°C for one month without detectable loss of activity. Antibody products are stable for twelve months from date of receipt when stored at -20°C to -80°C.

Preservative-Free.

Sodium azide is recommended to avoid contamination (final concentration 0.05%-0.1%). It is toxic to cells and should be disposed of properly. Avoid repeated freeze-thaw cycles.

## Clonality

Polyclonal

## Ig Type

Rabbit IgG

## Applications

ELISA, IHC-P

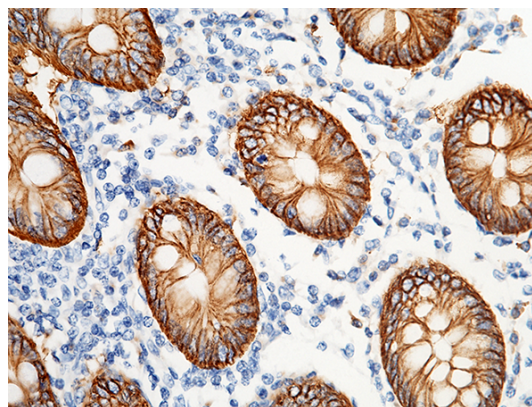
## Dilutions

ELISA: 0.1-0.2 µg/mL

This antibody can be used at 0.1-0.2 µg/mL with the appropriate secondary reagents to detect Human GPA33. The detection limit for Human GPA33 is approximately 0.0049 ng/well.

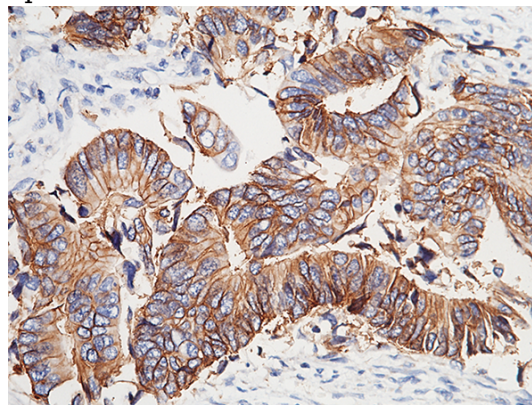
IHC-P: 0.1-2 µg/mL

## Validations



GPA33 Antibody, Rabbit PAb, Antigen Affinity Purified, Immunohistochemistry

Immunochemical staining of human GPA33 in human appendix with rabbit polyclonal antibody (1 µg/mL, formalin-fixed paraffin embedded sections). Positive staining was localized to epithelium.



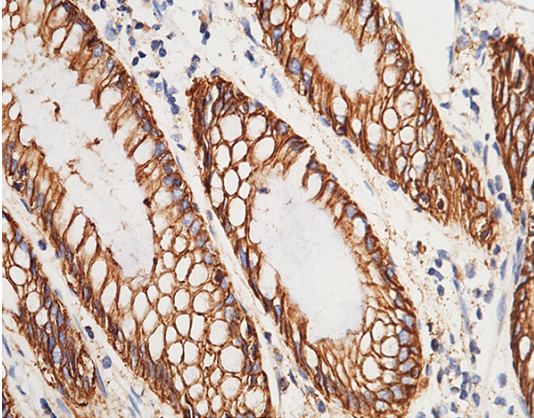
GPA33 Antibody, Rabbit PAb, Antigen Affinity Purified, Immunohistochemistry

# Anti-GPA33 antibody

Catalog Number: 103329

---

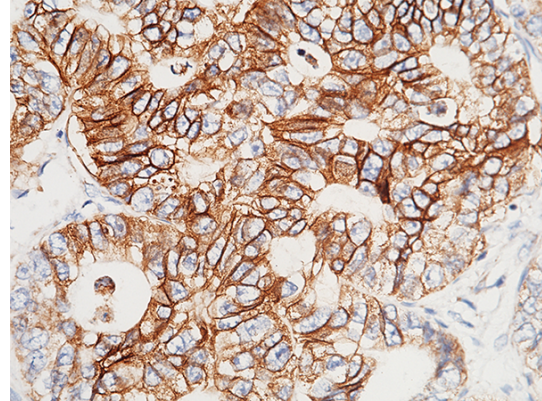
Immunochemical staining of human GPA33 in human colon carcinoma with rabbit polyclonal antibody (1 µg/mL, formalin-fixed paraffin embedded sections). Positive staining was localized to epithelium.



GPA33 Antibody, Rabbit PAb, Antigen Affinity Purified, Immunohistochemistry

Immunochemical staining of human GPA33 in human colon with rabbit polyclonal antibody (1

µg/mL, formalin-fixed paraffin embedded sections). Positive staining was localized to epithelium.



GPA33 Antibody, Rabbit PAb, Antigen Affinity Purified, Immunohistochemistry

Immunochemical staining of human GPA33 in human rectal cancer with rabbit polyclonal antibody (1 µg/mL, formalin-fixed paraffin embedded sections). Positive staining was localized to epithelium.