

Anti-CD155/PVR antibody



Catalog Number: 103240

Product name

Anti-CD155/PVR antibody

Immunogen

[Rhesus CD155/PVR \(His Tag\) recombinant protein](#)

Specificity

Rhesus PVR / CD155

No cross-reactivity in ELISA with Human cell lysate (293 cell line)

Antibody description

Mouse monoclonal to CD155/PVR

Preparation

This antibody was produced from a hybridoma resulting from the fusion of a mouse myeloma with B cells obtained from a mouse immunized with purified, recombinant Rhesus PVR / CD155 (NP_001036851.1; Met 1-Asn 343). The IgG fraction of the cell culture supernatant was purified by Protein A affinity chromatography.

Formulation

0.2 µm filtered solution in PBS with 5% trehalose

Storage

This antibody can be stored at 2°C-8°C for one month without detectable loss of activity. Antibody products are stable for twelve months from date of receipt when stored at -20°C to -80°C.

Preservative-Free.

Sodium azide is recommended to avoid

contamination (final concentration 0.05%-0.1%). It is toxic to cells and should be disposed of properly. Avoid repeated freeze-thaw cycles.

Clonality

Monoclonal

Ig Type

Mouse IgG1

Applications

ELISA, WB

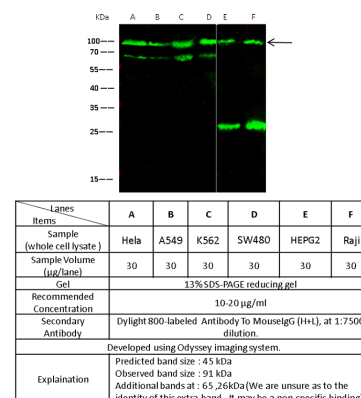
Dilutions

WB: 10-20 µg/ml

ELISA: 0.5-1 µg/mL

This antibody can be used at 0.5-1 µg/mL with the appropriate secondary reagents to detect Rhesus PVR. The detection limit for Rhesus PVR is approximately 0.31 ng/well.

Validations



CD155 / PVR Antibody, Mouse MAb, Western blot