

Anti-EPDR1 antibody



Catalog Number: 103239

Product name

Anti-EPDR1 antibody

Immunogen

[Human EPDR1 \(His Tag\) recombinant protein](#)

Specificity

Human EPDR1

Antibody description

Rabbit polyclonal to EPDR1

Preparation

Produced in rabbits immunized with purified, recombinant Human EPDR1 (rh EPDR1; Q9UM22-1; Met1-Trp224). EPDR1 specific IgG was purified by Human EPDR1 affinity chromatography.

Formulation

0.2 μ m filtered solution in PBS

Storage

This antibody can be stored at 2°C-8°C for one month without detectable loss of activity. Antibody products are stable for twelve months from date of receipt when stored at -20°C to -80°C.

Preservative-Free.

Sodium azide is recommended to avoid contamination (final concentration 0.05%-0.1%). It is toxic to cells and should be disposed of properly. Avoid repeated freeze-thaw cycles.

Clonality

Polyclonal

Ig Type

Rabbit IgG

Applications

ELISA, WB

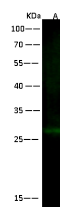
Dilutions

WB: 10-30 μ g/ml

ELISA: 0.1-0.2 μ g/mL

This antibody can be used at 0.1-0.2 μ g/mL with the appropriate secondary reagents to detect Human EPDR1. The detection limit for Human EPDR1 is < 0.039 ng/well.

Validations



| Items | Lanes |
|---|---|
| Sample | Bal brain tissue lysate |
| Sample Volume (μ g/lane) | 30 |
| Gel | 13% SDS-PAGE reducing gel |
| Recommended Concentration | 10-30 μ g/ml |
| Secondary Antibody | Dylight 800-labeled Antibody to Rabbit IgG (H+L), at 1:5000 dilution. |
| Developed using Odyssey imaging system. | |
| Explanation | Predicted band size : 23 kDa Observed band size : 27 kDa |

EPDR1 Antibody, Rabbit PAb, Antigen Affinity Purified, Western blot