

Anti-CNDP1 antibody



Catalog Number: 103195

Product name

Anti-CNDP1 antibody

Immunogen

[Human CNDP1 \(His Tag\) recombinant protein](#)

Specificity

Human CNDP1

Antibody description

Rabbit monoclonal to CNDP1

Preparation

This antibody was obtained from a rabbit immunized with purified, recombinant Human CNDP1 (rh CNDP1; NP_116038.4; Ser 27-His 508).

Formulation

0.2 µm filtered solution in PBS with 5% trehalose

Storage

This antibody can be stored at 2°C-8°C for one month without detectable loss of activity. Antibody products are stable for twelve months from date of receipt when stored at -20°C to -80°C.

Preservative-Free.

Sodium azide is recommended to avoid contamination (final concentration 0.05%-0.1%). It is toxic to cells and should be disposed of properly. Avoid repeated freeze-thaw cycles.

Clonality

Monoclonal

Ig Type

Rabbit IgG

Applications

ELISA, IF, ICC/IF

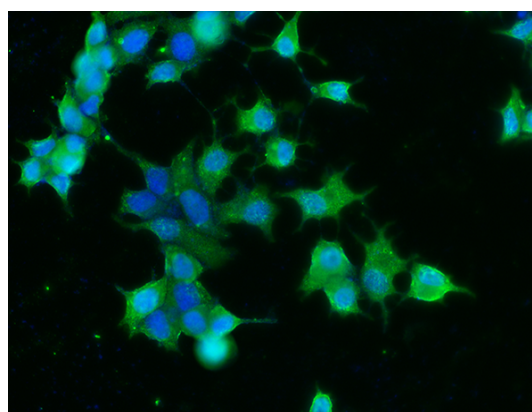
Dilutions

ELISA: 0.1-0.2 µg/mL

This antibody can be used at 0.1-0.2 µg/mL with the appropriate secondary reagents to detect Human CNDP1. The detection limit for Human CNDP1 is approximately 0.0049 ng/well.

ICC/IF: 10-25 µg/mL

Validations



CNDP1 Antibody, Rabbit MAb, Immunofluorescence

Immunofluorescence staining of Human CNDP1 in MCF7 cells. Cells were fixed with 4% PFA, permeabilized with 0.3% Triton X-100 in PBS, blocked with 10% serum, and incubated with rabbit anti-Human CNDP1 monoclonal antibody (15 µg/ml) at 37°C 1 hour. Then cells were stained with the Alexa Fluor® 488-conjugated goat Anti-rabbit IgG secondary antibody (green) and counterstained with DAPI (blue). Positive staining was localized to cytoplasm.