

Catalog Number: 103138

Product name

Polyclonal

Anti-WAP5 / WFDC2 / HE4 antibody

Ig Type

Rabbit IgG

Immunogen

[Human WAP5 / WFDC2 / HE4 \(His Tag\) recombinant protein](#)

Applications

ELISA, IHC-P

Specificity

Human WFDC2 / HE4

Dilutions

ELISA: 0.1-0.2 µg/mL

Antibody description

Rabbit polyclonal to WAP5 / WFDC2 / HE4

This antibody can be used at 0.1-0.2 µg/mL with the appropriate secondary reagents to detect WFDC2. The detection limit for WFDC2 is approximately 0.00245 ng/well.

Preparation

Produced in rabbits immunized with purified, recombinant Human WFDC2 / HE4 (rh WFDC2 / HE4; NP_006094.3; Met 1-Phe 124). WFDC2 / HE4 specific IgG was purified by Human WFDC2 / HE4 affinity chromatography.

IHC-P: 0.2-2 µg/mL

Formulation

0.2 µm filtered solution in PBS with 5% trehalose

Validations

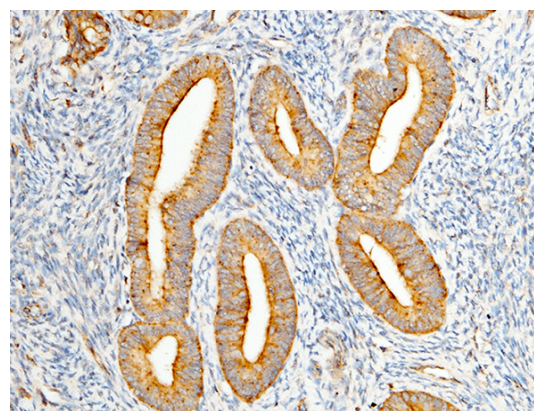
Storage

This antibody can be stored at 2°C-8°C for one month without detectable loss of activity. Antibody products are stable for twelve months from date of receipt when stored at -20°C to -80°C.

Preservative-Free.

Sodium azide is recommended to avoid contamination (final concentration 0.05%-0.1%). It is toxic to cells and should be disposed of properly. Avoid repeated freeze-thaw cycles.

Clonality



WAP5 / WFDC2 / HE4 Antibody, Rabbit PAb, Antigen Affinity Purified, Immunohistochemistry

Immunochemical staining of human WFDC2 in human endometrium with rabbit polyclonal antibody (1 µg/mL, formalin-fixed paraffin embedded sections). Positive staining was localized to the epithelium of uterine gland.