

# Anti-ACRV1 antibody



Catalog Number: 103127

## Product name

Polyclonal

Anti-ACRV1 antibody

## Ig Type

## Immunogen

Rabbit IgG

[Human ACRV1 \(His Tag\) recombinant protein](#)

## Applications

ELISA, IHC-P

## Specificity

Human ACRV1

## Dilutions

ELISA: 0.1-0.2 µg/mL

## Antibody description

Rabbit polyclonal to ACRV1

This antibody can be used at 0.1-0.2 µg/mL with the appropriate secondary reagents to detect Human ACRV1. The detection limit for Human ACRV1 is approximately 0.00245 ng/well.

## Preparation

Produced in rabbits immunized with purified, recombinant Human ACRV1 (rh ACRV1; P26436-1, Gln 22-Ile 265). ACRV1 specific IgG was purified by Human ACRV1 affinity chromatography.

IHC-P: 0.05-1 µg/mL

## Formulation

0.2 µm filtered solution in PBS with 5% trehalose

## Validations

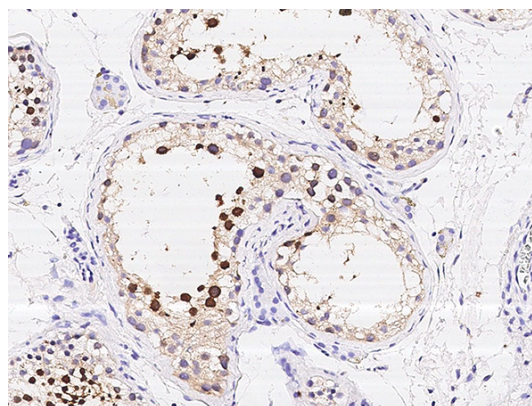
## Storage

This antibody can be stored at 2°C-8°C for one month without detectable loss of activity. Antibody products are stable for twelve months from date of receipt when stored at -20°C to -80°C.

Preservative-Free.

Sodium azide is recommended to avoid contamination (final concentration 0.05%-0.1%). It is toxic to cells and should be disposed of properly. Avoid repeated freeze-thaw cycles.

## Clonality



ACRV1 Antibody, Rabbit PAb, Antigen Affinity Purified, Immunohistochemistry

Immunochemical staining of human ACRV1 in human testis with rabbit polyclonal antibody (0.05 µg/mL, formalin-fixed paraffin embedded sections).