

# Anti-Cathepsin D/CTSD antibody



Catalog Number: 103016

## Product name

Anti-Cathepsin D/CTSD antibody

## Immunogen

[Mouse Cathepsin D/CTSD \(His Tag\) recombinant protein](#)

## Specificity

Mouse Cathepsin D / CTSD

## Antibody description

Rabbit monoclonal to Cathepsin D/CTSD

## Preparation

This antibody was obtained from a rabbit immunized with purified, recombinant Mouse Cathepsin D / CTSD (rM Cathepsin D / CTSD; NP\_034113.1; Met 1-Leu 410).

## Formulation

0.2 µm filtered solution in PBS with 5% trehalose

## Storage

This antibody can be stored at 2°C-8°C for one month without detectable loss of activity. Antibody products are stable for twelve months from date of receipt when stored at -20°C to -80°C.

Preservative-Free.

Sodium azide is recommended to avoid contamination (final concentration 0.05%-0.1%). It is toxic to cells and should be disposed of properly. Avoid repeated freeze-thaw cycles.

## Clonality

Monoclonal

## Ig Type

Rabbit IgG

## Applications

ELISA, WB, IP

## Dilutions

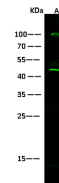
WB: 10-20 µg/ml

ELISA: 0.1-0.2 µg/mL

This antibody can be used at 0.1-0.2 µg/mL with the appropriate secondary reagents to detect Mouse CTSD. The detection limit for Mouse CTSD is approximately 0.00975 ng/well.

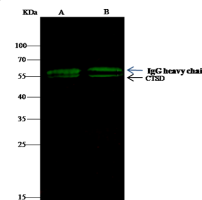
IP: 4-6 µg/mg of lysate

## Validations



Items	Lanes	A
Sample (whole cell lysate)		MCF7
Sample Volume (µg/lane)		30
Gel		13% SDS-PAGE reducing gel
Recommended Concentration		10-20 µg/ml
Secondary Antibody		Dylight 800-labeled Antibody to Rabbit IgG (H+L), at 1:5000 dilution.
Explanation		Developed using Odyssey imaging system. Predicted band size : 45 kDa Observed band size : 45 kDa Additional bands at : 100 kDa and 36 kDa (We are unsure as to the identity of these extra bands. They are possible non-specific bindings).

## Cathepsin D / CTSD Antibody, Rabbit MAb



Items	Lanes	A	B
Sample (whole cell lysate)		MCF-7	Hsp02
Sample quantity		0.5 mg	
IP antibody quantity		2 µg	
Protein O agarose		15 µl of 50% Protein O Agarose	
Gel		13% SDS-PAGE reducing gel	
Primary antibody		mCTSD antibody at 10 µg/ml	
Secondary antibody		Dylight 800-labeled antibody to rabbit IgG (H+L), at 1:5000 dilution	

## Cathepsin D / CTSD Antibody, Rabbit MAb