

Anti-PPM1A/PP2CA antibody



Catalog Number: 102935

Product name

Anti-PPM1A/PP2CA antibody

Immunogen

[Mouse PPM1A/PP2CA \(His Tag\) recombinant protein](#)

Specificity

Mouse PPM1A / PP2C-alpha

Antibody description

Rabbit polyclonal to PPM1A/PP2CA

Preparation

Produced in rabbits immunized with purified, recombinant Mouse PPM1A (rM PPM1A; NP_032936.1; Met 1-Trp 382). PPM1A specific IgG was purified by mouse PPM1A affinity chromatography

Formulation

0.2 µm filtered solution in PBS with 5% trehalose

Storage

This antibody can be stored at 2°C-8°C for one month without detectable loss of activity. Antibody products are stable for twelve months from date of receipt when stored at -20°C to -80°C.

Preservative-Free.

Sodium azide is recommended to avoid contamination (final concentration 0.05%-0.1%). It is toxic to cells and should be disposed of properly. Avoid repeated freeze-thaw cycles.

Clonality

Polyclonal

Ig Type

Rabbit IgG

Applications

ELISA, WB, IP

Dilutions

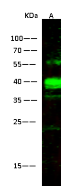
WB: 1-10 µg/mL

ELISA: 0.1-0.2 µg/mL

This antibody can be used at 0.1-0.2 µg/mL with the appropriate secondary reagents to detect Mouse PPM1A. The detection limit for Mouse PPM1A is approximately 0.00245 ng/well.

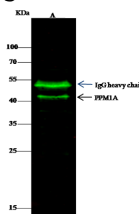
IP: 4-6 µg/mg of lysate

Validations



Lanes	A
Items	
Sample (whole cell lysate)	293T
Sample Volume (µg/lane)	30
Gel	13% SDS-PAGE reducing gel
Recommended concentration	1-10 µg/ml
Secondary Antibody	Dylight 800-labeled Antibody to Rabbit IgG (H+L), at 1:5000 dilution.
Developed using Odyssey imaging system.	
Explanation	Predicted band size : 42 kDa Observed band size : 40 kDa Additional bands at : 55 kDa and 36 kDa [We are unsure as to the identity of these extra bands. They are possible non-specific bindings].

PPM1A / PP2CA / PP2C-alpha Antibody, Rabbit PAb, Antigen Affinity Purified, Western blot



Lanes	A
Items	
Sample (whole cell lysate)	293T
Sample quantity	0.5 mg
IP antibody quantity	2 µg
Protein G agarose	15 µl of 50% Protein G Agarose
Gel	13% SDS-PAGE reducing gel
Primary antibody	mPPM1A antibody at 5 µg/ml
Secondary antibody	Dylight 800-labeled antibody to rabbit IgG (H+L), at 1:5000 dilution.

PPM1A / PP2CA / PP2C-alpha Antibody, Rabbit PAb, Antigen Affinity Purified