

Anti-CDNF/ARMETL1 antibody



Catalog Number: 102879

Product name

Anti-CDNF/ARMETL1 antibody

Immunogen

[Mouse CDNF/ARMETL1 \(His Tag\) recombinant protein](#)

Specificity

Mouse Acetylcholinesterase / ACHE

Antibody description

Rabbit polyclonal to CDNF/ARMETL1

Preparation

Produced in rabbits immunized with purified, recombinant Mouse Acetylcholinesterase / ACHE (rM Acetylcholinesterase / ACHE; NP_033729.1; Met 1-Leu 614). Acetylcholinesterase / ACHE specific IgG was purified by Mouse Acetylcholinesterase / ACHE affinity chromatography.

Formulation

0.2 µm filtered solution in PBS with 5% trehalose

Storage

This antibody can be stored at 2°C-8°C for one month without detectable loss of activity. Antibody products are stable for twelve months from date of receipt when stored at -20°C to -80°C. Preservative-Free.

Sodium azide is recommended to avoid contamination (final concentration 0.05%-0.1%). It is toxic to cells and should be disposed of properly. Avoid repeated freeze-thaw cycles.

Clonality

Polyclonal

Ig Type

Rabbit IgG

Applications

ELISA, IHC-P

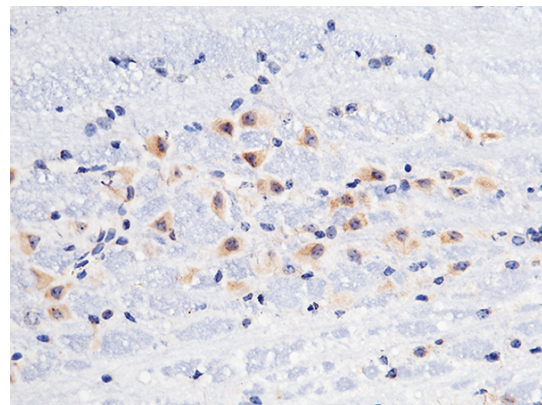
Dilutions

ELISA: 0.1-0.2 µg/mL

This antibody can be used at 0.1-0.2 µg/mL with the appropriate secondary reagents to detect Mouse ACHE. The detection limit for Mouse ACHE is approximately 0.00975 ng/well.

IHC-P: 0.1-2 µg/mL

Validations



CDNF / ARMETL1 Antibody, Rabbit PAb, Antigen Affinity Purified, Immunohistochemistry

Immunochemical staining of mouse ARMETL1 in mouse brain with rabbit polyclonal antibody (1 µg/mL, formalin-fixed paraffin embedded sections).