

# Anti-IL12A / IL-12A antibody



Catalog Number: 102810

## Product name

Anti-IL12A / IL-12A antibody

## Immunogen

[Human IL12A / IL-12A \(His Tag\) recombinant protein](#)

## Specificity

Human IL12A / NKSF1

## Antibody description

Rabbit polyclonal to IL12A / IL-12A

## Preparation

Produced in rabbits immunized with purified, recombinant Human IL12A (rh IL12A; NP\_000873.2; Met 1-Ser 219). IL12A IgG was purified by human IL12A affinity chromatography

## Formulation

0.2 µm filtered solution in PBS with 5% trehalose

## Storage

This antibody can be stored at 2°C-8°C for one month without detectable loss of activity. Antibody products are stable for twelve months from date of receipt when stored at -20°C to -80°C.

Preservative-Free.

Sodium azide is recommended to avoid contamination (final concentration 0.05%-0.1%). It is toxic to cells and should be disposed of properly. Avoid repeated freeze-thaw cycles.

## Clonality

Polyclonal

## Ig Type

Rabbit IgG

## Applications

ELISA, WB, IHC-P

## Dilutions

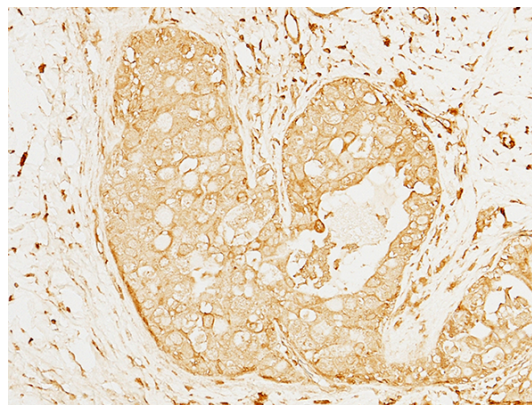
WB: 1-2 µg/mL

ELISA: 0.1-0.2 µg/mL

This antibody can be used at 0.1-0.2 µg/mL with the appropriate secondary reagents to detect Human IL12A. The detection limit for Human IL12A is approximately 0.00245 ng/well.

IHC-P: 0.1-2 µg/mL

## Validations



IL12A / NKSF1 Antibody, Rabbit PAb, Antigen Affinity Purified, Immunohistochemistry

Immunochemical staining of human IL12a in human breast carcinoma with rabbit polyclonal antibody (1 µg/mL, formalin-fixed paraffin embedded sections).