

# Anti-MMP-8 / MMP8 antibody



Catalog Number: 102435

## Product name

Anti-MMP-8 / MMP8 antibody

## Immunogen

[Human MMP-8 / MMP8 \(His Tag\) recombinant protein](#)

## Specificity

Human MMP-8 / CLG1

## Antibody description

Rabbit polyclonal to MMP-8 / MMP8

## Preparation

Produced in rabbits immunized with purified, recombinant Human MMP8 (rh MMP8; NP\_002415.1; Met 1-Gly 467). MMP8 specific IgG was purified by human MMP8 affinity chromatography.

## Formulation

0.2 µm filtered solution in PBS with 5% trehalose

## Storage

This antibody can be stored at 2°C-8°C for one month without detectable loss of activity. Antibody products are stable for twelve months from date of receipt when stored at -20°C to -80°C.

Preservative-Free.

Sodium azide is recommended to avoid contamination (final concentration 0.05%-0.1%). It is toxic to cells and should be disposed of

properly. Avoid repeated freeze-thaw cycles.

## Clonality

Polyclonal

## Ig Type

Rabbit IgG

## Applications

ELISA, WB

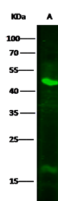
## Dilutions

WB: 2-5 µg/ml

ELISA: 0.5-1 µg/mL

This antibody can be used at 0.5-1 µg/mL with the appropriate secondary reagents to detect Human MMP-8. The detection limit for Human MMP-8 is 0.00245 ng/well.

## Validations



Items	Lanes	A
Sample (whole cell lysate)		NIH/3T3
Sample Volume (µg/lane)		30
Gel		13% SDS-PAGE reducing gel
Recommended Concentration		2.5 µg/ml
Secondary Antibody		Dylight 800-labeled Antibody To Rabbit IgG(H+L), at 1:5000 dilution.

MMP-8 / CLG1 Antibody, Rabbit PAb, Antigen Affinity Purified, Western blot