

Anti-MMP-8 / MMP8 antibody



Catalog Number: 102434

Product name

Anti-MMP-8 / MMP8 antibody

Immunogen

[Human MMP-8 / MMP8 \(His Tag\) recombinant protein](#)

Specificity

Human MMP-8 / CLG1

Antibody description

Rabbit polyclonal to MMP-8 / MMP8

Preparation

Produced in rabbits immunized with purified, recombinant Human MMP8 (rh MMP8; NP_002415.1; Met 1-Gly 467). Total IgG was purified by Protein A affinity chromatography.

Formulation

0.2 µm filtered solution in PBS with 5% trehalose

Storage

This antibody can be stored at 2°C-8°C for one month without detectable loss of activity. Antibody products are stable for twelve months from date of receipt when stored at -20°C to -80°C.

Preservative-Free.

Sodium azide is recommended to avoid contamination (final concentration 0.05%-0.1%). It is toxic to cells and should be disposed of

properly. Avoid repeated freeze-thaw cycles.

Clonality

Polyclonal

Ig Type

Rabbit IgG

Applications

ELISA, WB

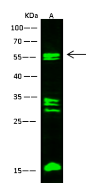
Dilutions

WB: 5-10 µg/ml

ELISA: 0.5-1 µg/mL

This antibody can be used at 0.5-1 µg/mL with the appropriate secondary reagents to detect Human MMP8. The detection limit for Human MMP8 is 0.00975 ng/well.

Validations



Lanes	
Items	A
Sample (whole cell lysate)	293T
Sample Volume (µg/lane)	30
Gel	13%SDS-PAGE reducing gel
Recommended Concentration	5-10 µg/ml
Secondary Antibody	Dylight 800 labeled Antibody To Rabbit IgG (H+L) at 1:5000 dilution.
Developed using Odyssey imaging system.	
Explanation	Predicted band size : 53 kDa Observed band size : 53 kDa Additional bands at : 30 kDa and 15 kDa (We are unsure as to the identity of these extra bands. They are possible non-specific bindings).

MMP-8 / CLG1 Antibody, Rabbit PAb, Western blot