

Anti-AIMP1/EMAP II antibody



Catalog Number: 102406

Product name

Anti-AIMP1/EMAP II antibody

Immunogen

[Mouse AIMP1/EMAP II recombinant protein](#)

Specificity

Mouse AIMP1 / EMAP II

Antibody description

Rabbit polyclonal to AIMP1/EMAP II

Preparation

Produced in rabbits immunized with purified, recombinant Mouse AIMP1 / EMAP II (rh AIMP1 / EMAP II; Q62386; Ser145-Lys310). AIMP1 / EMAP II specific IgG was purified by Mouse AIMP1 / EMAP II affinity chromatography.

Formulation

0.2 μ m filtered solution in PBS

Storage

This antibody can be stored at 2°C-8°C for one month without detectable loss of activity. Antibody products are stable for twelve months from date of receipt when stored at -20°C to -80°C.

Preservative-Free.

Sodium azide is recommended to avoid contamination (final concentration 0.05%-0.1%). It is toxic to cells and should be disposed of properly. Avoid repeated freeze-thaw cycles.

Clonality

Polyclonal

Ig Type

Rabbit IgG

Applications

ELISA, WB, IP

Dilutions

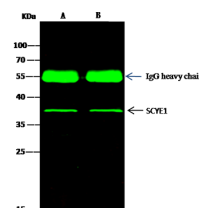
WB: 5-10 μ g/mL

ELISA: 0.1-0.2 μ g/mL

This antibody can be used at 0.1-0.2 μ g/mL with the appropriate secondary reagents to detect Mouse AIMP1 / EMAP II. The detection limit for Mouse AIMP1 / EMAP II is < 0.039 ng/well.

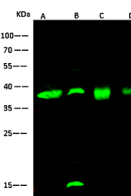
IP: 1-4 μ g/mg of lysate

Validations



| Lanes | A | B |
|----------------------------|--|------|
| Items | | |
| Sample (whole cell lysate) | HepG2 | 293T |
| Sample quantity | 0.5 mg | |
| IP antibody quantity | 2 μ g | |
| Protein G agarose | 1.5 μ l of 50% Protein G Agarose | |
| Gel | 13% SDS-PAGE reducing gel | |
| Primary antibody | mSCYE1 antibody at 5 μ g/ml | |
| Secondary antibody | Dylight 800-labeled antibody to rabbit IgG (H+L), at 1:5000 dilution | |

AIMP1 / EMAP II Antibody, Rabbit PAb, Antigen Affinity Purified, Immunoprecipitation



| Lanes | A | B | C | D |
|-------------------------------|---|-------------------------|--------------------------|---------------------------|
| Items | | | | |
| Sample | Jurkat (whole cell lysate) | Rat brain tissue lysate | 293T (whole cell lysate) | HepG2 (whole cell lysate) |
| Sample Volume (μ g/lane) | 30 | 30 | 30 | 30 |
| Gel | 13% SDS-PAGE reducing gel | | | |
| Recommended Concentration | 5-10 μ g/ml | | | |
| Secondary Antibody | Dylight 800-labeled Antibody To Rabbit IgG (H+L), at 1:5000 dilution. Developed using Odyssey imaging system. | | | |
| Explanation | Predicted band size : 34 kDa Observed band size : 38 kDa Additional bands at : 17 kDa (We are unsure as to the identity of these extra bands. They are possible non-specific bindings). | | | |

AIMP1 / EMAP II Antibody, Rabbit PAb, Antigen Affinity Purified, Western blot