

Anti-CD86/B7-2 antibody



Catalog Number: 102241

General Information

Product name:

Anti-CD86/B7-2 antibody

Immunogen:

[Mouse CD86/B7-2 \(His Tag\) recombinant protein](#)

Applications:

ELISA, WB, IP

Specificity:

Mouse CD86 / ETC-1 / B7-2

Antibody description:

Rabbit polyclonal to CD86/B7-2

Properties

Preparation:

Produced in rabbits immunized with purified, recombinant Mouse CD86 extracellular domain (rM CD86; NP_062261.3; Met 1-Glu 245). CD86 specific IgG was purified by mouse CD86 affinity chromatography.

Formulation:

0.2 µm filtered solution in PBS with 5% trehalose

Storage:

This antibody can be stored at 2°C-8°C for one month without detectable loss of activity. Antibody products are stable for twelve months from date of receipt when stored at -20°C to -80°C.

Preservative-Free.

Sodium azide is recommended to avoid contamination (final concentration 0.05%-0.1%). It is toxic to cells and should be disposed of properly. Avoid repeated freeze-thaw cycles.

Clonality:

Polyclonal

Ig Type:Rabbit IgG

Applications

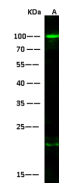
WB: 20-40 µg/mL

ELISA: 0.5-1.0 µg/mL

This antibody can be used at 0.5-1.0 µg/mL with the appropriate secondary reagents to detect Mouse CD86. The detection limit for Mouse CD86 is 0.00245 ng/well.

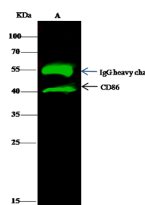
IP: 1-4 µg/mg of lysate

Validations



| Items | Lanes | A |
|---------------------------|--|--|
| Sample (Membrane lysate) | | Jurkat |
| Sample Volume (µg/lane) | | 20 |
| Gel | | 13%SDS-PAGE reducing gel |
| Recommended Concentration | | 20-40 µg/ml |
| Secondary Antibody | | Dylight 800-labeled Antibody to Rabbit IgG (H+L), at 1:5000 dilution |
| Explanation | Developed using Odyssey imaging system. Predicted band size : 70 kDa Observed band size : 100 kDa Additional bands at : 210 kDa (We are unsure as to the identity of these extra bands. They are possible non-specific bindings). | |

CD86 / ETC-1 / B7-2 Antibody, Rabbit PAb, Antigen Affinity Purified, Western blot



| Items | Lanes | A |
|----------------------------|-------|--|
| Sample (whole cell lysate) | | Raji |
| Sample quantity | | 0.5 mg |
| IP antibody quantity | | 2 µg |
| Protein G agarose | | 15 µl of 50% Protein G Agarose |
| Gel | | 13%SDS-PAGE reducing gel |
| Primary antibody | | mCD86-His antibody at 10 µg/ml |
| Secondary antibody | | Dylight 800-labeled antibody to rabbit IgG (H+L), at 1:5000 dilution |

CD86 / ETC-1 / B7-2 Antibody, Rabbit PAb, Antigen Affinity Purified, Immunoprecipitation