

Anti-CD13 / ANPEP antibody



Catalog Number: 102152

Product name

Anti-CD13 / ANPEP antibody

Immunogen

[Mouse CD13 / ANPEP \(His Tag\) recombinant protein](#)

Specificity

Mouse ANPEP / APN / CD13

Antibody description

Rabbit polyclonal to CD13 / ANPEP

Preparation

Produced in rabbits immunized with purified, recombinant Mouse ANPEP metalloprotease domain (rM ANPEP; Lys 66-Ser 966; NP_032512.2). ANPEP specific IgG was purified by mouse ANPEP affinity chromatography.

Formulation

0.2 µm filtered solution in PBS with 5% trehalose

Storage

This antibody can be stored at 2°C-8°C for one month without detectable loss of activity. Antibody products are stable for twelve months from date of receipt when stored at -20°C to -80°C.

Preservative-Free.

Sodium azide is recommended to avoid contamination (final concentration 0.05%-0.1%). It is toxic to cells and should be disposed of properly. Avoid repeated freeze-thaw cycles.

Clonality

Polyclonal

Ig Type

Rabbit IgG

Applications

ELISA, IHC-P

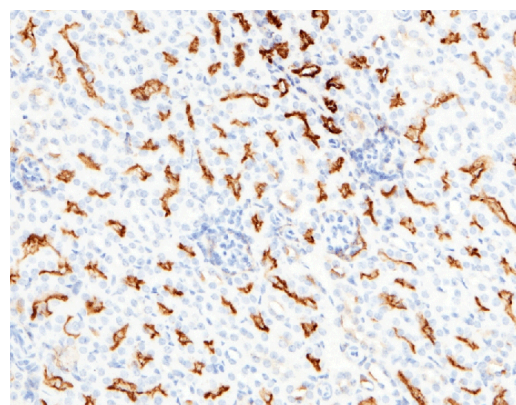
Dilutions

ELISA: 0.1-0.2 µg/mL

This antibody can be used at 0.1-0.2 µg/mL with the appropriate secondary reagents to detect Mouse ANPEP. The detection limit for Mouse ANPEP is approximately 0.00245 ng/well.

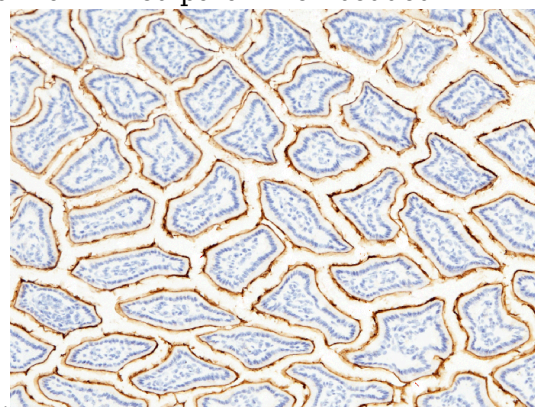
IHC-P: 0.1-2 µg/mL

Validations



CD13 / ANPEP Antibody, Rabbit PAb, Antigen Affinity Purified, Immunohistochemistry

Immunochemical staining of mouse ANPEP in mouse kidney with rabbit polyclonal antibody (0.2 µg/mL, formalin-fixed paraffin embedded



sections).

CD13 / ANPEP Antibody, Rabbit PAb, Antigen Affinity Purified, Immunohistochemistry

Anti-CD13 / ANPEP antibody



Catalog Number: 102152

Immunochemical staining of mouse ANPEP in mouse intestine with rabbit polyclonal antibody (0.2 µg/mL, formalin-fixed paraffin embedded

sections). Positive staining was localized to striated border.