

# Anti-VWF antibody



Catalog Number: 102051

## Product name

Anti-VWF antibody

## Immunogen

[Human VWF \(His Tag\) recombinant protein](#)

## Specificity

Human vWF / von Willebrand factor

## Antibody description

Rabbit monoclonal to VWF

## Preparation

This antibody was obtained from a rabbit immunized with purified, recombinant Human von Willebrand factor (rh vWF; Met 1-Lys 2813; NP\_000543.2)

## Formulation

0.2  $\mu$ m filtered solution in PBS with 5% trehalose

## Storage

This antibody can be stored at 2°C-8°C for one month without detectable loss of activity. Antibody products are stable for twelve months from date of receipt when stored at -20°C to -80°C.

Preservative-Free.

Sodium azide is recommended to avoid contamination (final concentration 0.05%-0.1%). It is toxic to cells and should be disposed of properly. Avoid repeated freeze-thaw cycles.

## Clonality

Monoclonal

## Ig Type

Rabbit IgG

## Applications

ELISA, IHC-P

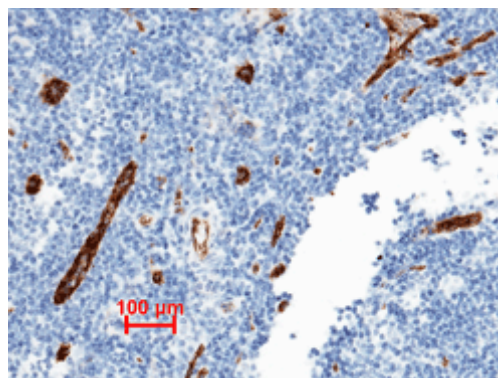
## Dilutions

ELISA: 0.1-0.2  $\mu$ g/mL

This antibody can be used at 0.1-0.2  $\mu$ g/mL with the appropriate secondary reagents to detect Human vWF. The detection limit for Human vWF is approximately 0.0049 ng/well.

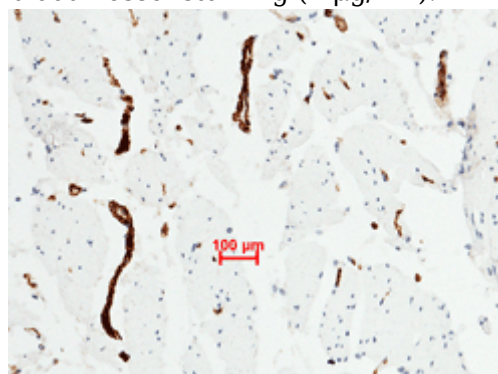
IHC-P: 0.5-5  $\mu$ g/mL

## Validations



vWF Antibody, Rabbit MAb,  
Immunohistochemistry

Immunohistochemical staining of formalin fixed, paraffin-embedded human lymphonode showing blood vessel staining (1  $\mu$ g/mL).



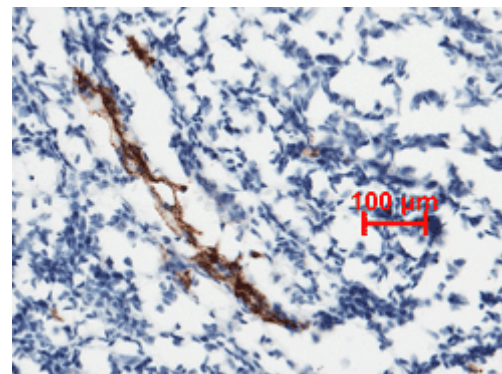
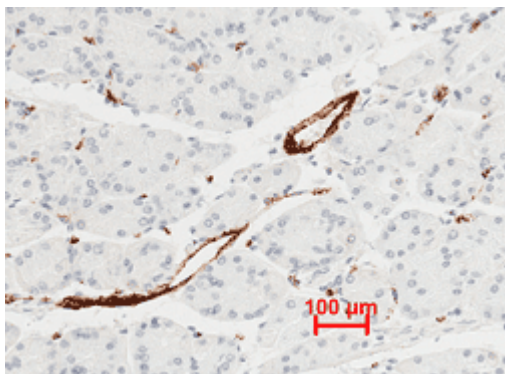
vWF Antibody, Rabbit MAb,  
Immunohistochemistry

Immunohistochemical staining of formalin fixed, paraffin-embedded human muscle showing blood vessel staining (1  $\mu$ g/mL).

# Anti-VWF antibody

Catalog Number: 102051

---



vWF Antibody, Rabbit MAb,  
Immunohistochemistry

Immunohistochemical staining of formalin fixed, paraffin-embedded human stomach showing blood vessel staining (1  $\mu\text{g/mL}$ ).

vWF Antibody, Rabbit MAb,  
Immunohistochemistry

Immunohistochemical staining of formalin fixed, paraffin-embedded human tonsil showing blood vessel staining (1  $\mu\text{g/mL}$ ).