

# Anti-KLK11/Kallikrein 11 antibody



Catalog Number: 102018

## Product name

Anti-KLK11/Kallikrein 11 antibody

## Immunogen

[Human KLK11/Kallikrein 11 \(His Tag\) recombinant protein](#)

## Specificity

Human KLK-11 / Kallikrein 11

## Antibody description

Rabbit polyclonal to KLK11/Kallikrein 11

## Preparation

Produced in rabbits immunized with purified, recombinant Human KLK11 / Kallikrein 11 (rh KLK-11; NP\_006844.1; Met 1-Asn 250). KLK11 specific IgG was purified by human KLK11 affinity chromatography.

## Formulation

0.2 µm filtered solution in PBS with 5% trehalose

## Storage

This antibody can be stored at 2°C-8°C for one month without detectable loss of activity. Antibody products are stable for twelve months from date of receipt when stored at -20°C to -80°C.

Preservative-Free.

Sodium azide is recommended to avoid contamination (final concentration 0.05%-0.1%). It is toxic to cells and should be disposed of

properly. Avoid repeated freeze-thaw cycles.

## Clonality

Polyclonal

## Ig Type

Rabbit IgG

## Applications

ELISA, WB

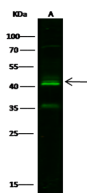
## Dilutions

WB: 10-15 µg/mL

ELISA: 0.5-1.0 µg/mL

This antibody can be used at 0.5-1.0 µg/mL with the appropriate secondary reagents to detect Human KLK11. The detection limit for Human KLK11 is 0.00245 ng/well.

## Validations



Items	Lanes
Sample (whole cell lysate)	A549
Sample Volume (µl/lane)	60
Gel	13% SDS-PAGE reducing gel
Recommended Concentration	5-10 µg/ml
Secondary Antibody	Dylight 800-labeled Antibody To Rabbit IgG (H+L), at 1:5000 dilution.

KLK-11 / Kallikrein 11 Antibody, Rabbit PAb, Antigen Affinity Purified, Western blot