

# Anti-IL-1R1/CD121a antibody



Catalog Number: 101955

## Product name

Anti-IL-1R1/CD121a antibody

## Immunogen

[Human IL-1R1/CD121a \(His Tag\) recombinant protein](#)

## Specificity

Human IL1R1 / CD121a

## Antibody description

Rabbit polyclonal to IL-1R1/CD121a

## Preparation

Produced in rabbits immunized with purified, recombinant Human IL1R1 (rh IL1R1; NP\_000868.1; Met 1-Thr 332). IL1R1 specific IgG was purified by human IL1R1 affinity chromatography.

## Formulation

0.2  $\mu$ m filtered solution in PBS with 5% trehalose

## Storage

This antibody can be stored at 2°C-8°C for one month without detectable loss of activity. Antibody products are stable for twelve months from date of receipt when stored at -20°C to -80°C.

Preservative-Free.

Sodium azide is recommended to avoid contamination (final concentration 0.05%-0.1%). It is toxic to cells and should be disposed of properly. Avoid repeated freeze-thaw cycles.

## Clonality

Polyclonal

## Ig Type

Rabbit IgG

## Applications

ELISA, WB, IP

## Dilutions

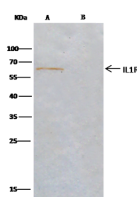
WB: 5-10  $\mu$ g/mL

ELISA: 0.5-1.0  $\mu$ g/mL

This antibody can be used at 0.5-1.0  $\mu$ g/mL with the appropriate secondary reagents to detect Human IL1R1. The detection limit for Human IL1R1 is 0.00245 ng/well.

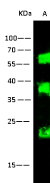
IP: 1-4  $\mu$ g/mg of lysate

## Validations



Lanes		A	B
Items			
Sample (whole cell lysate)		RAW264.7	
Sample quantity		0.5 mg	
IP antibody type		IL1R1-IP02	Rabbit blank IgG
IP antibody quantity		2 $\mu$ g	
Protein G agarose		15 $\mu$ l of 50% Protein G Agarose	
Gel		13% SDS-PAGE reducing gel	
Primary antibody		IL1R1 antibody at 5 $\mu$ g/ml [Cat# 10126-IP02]	
Secondary antibody		Clean-Block IP Detection Reagent (HRP) at 1:1000 dilution	

IL1R1 / CD121a Antibody, Rabbit PAb, Antigen Affinity Purified, Immunoprecipitation



Lanes		A
Items		
Sample (Membrane lysate)		RAW264.7
Sample Volume ( $\mu$ g/lane)		50
Gel		13% SDS-PAGE reducing gel
Recommended Concentration		5-10 $\mu$ g/ml
Secondary Antibody		Dylight 800 labeled Antibody to Rabbit IgG (H+L) at 1:5000 dilution.
		Developed using Odyssey imaging system.
Explanation		Predicted band size : 65 kDa Observed band size : 65 kDa Additional bands at : 38 kDa and 23 kDa (We are unsure as to the identity of these extra bands. They are possible non-specific bindings).

IL1R1 / CD121a Antibody, Rabbit PAb, Antigen Affinity Purified, Western blot