

# Anti-CCL8/MCP-2 antibody



Catalog Number: 101598

## Product name

Anti-CCL8/MCP-2 antibody

## Immunogen

[Mouse CCL8/MCP-2 \(His & NusA Tag\) recombinant protein](#)

## Specificity

Mouse CCL8 / MCP-2

## Antibody description

Rabbit polyclonal to CCL8/MCP-2

## Preparation

Produced in rabbits immunized with purified, recombinant Mouse CCL8 / MCP-2 (rM CCL8 / MCP-2; Q9Z121; Gly24-Pro94). CCL8 / MCP-2 specific IgG was purified by Mouse CCL8 / MCP-2 affinity chromatography.

## Formulation

0.2 µm filtered solution in PBS

## Storage

This antibody can be stored at 2°C-8°C for one month without detectable loss of activity. Antibody products are stable for twelve months from date of receipt when stored at -20°C to -80°C.

Preservative-Free.

Sodium azide is recommended to avoid contamination (final concentration 0.05%-0.1%). It is toxic to cells and should be disposed of properly. Avoid repeated freeze-thaw cycles.

## Clonality

Polyclonal

## Ig Type

Rabbit IgG

## Applications

ELISA, IHC-P

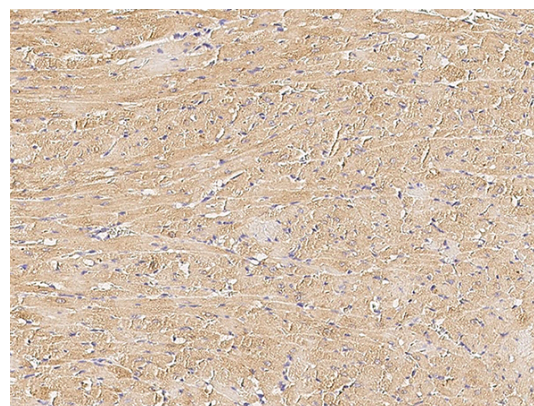
## Dilutions

ELISA: 0.1-0.2 µg/mL

This antibody can be used at 0.1-0.2 µg/mL µg/ml with the appropriate secondary reagents to detect Mouse CCL8 / MCP-2.

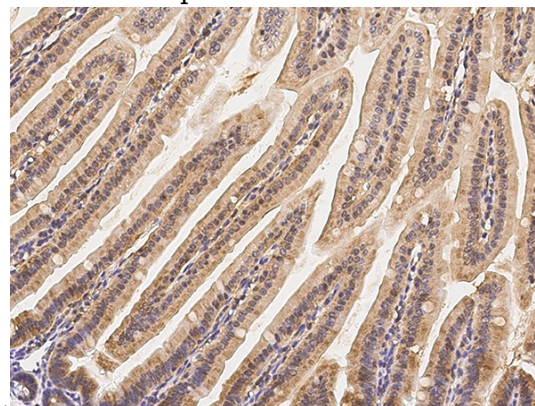
IHC-P: 0.5-5 µg/mL

## Validations



CCL8 / MCP-2 Antibody, Rabbit PAb, Antigen Affinity Purified, Immunohistochemistry

Immunochemical staining of mouse CCL8 in mouse heart with rabbit polyclonal antibody (1 µg/mL, formalin-fixed paraffin embedded



sections).

CCL8 / MCP-2 Antibody, Rabbit PAb, Antigen Affinity Purified, Immunohistochemistry

# Anti-CCL8/MCP-2 antibody



Catalog Number: 101598

---

Immunochemical staining of mouse CCL8 in mouse small intestine with rabbit polyclonal

antibody (2  $\mu\text{g}/\text{mL}$ , formalin-fixed paraffin embedded sections).