

Anti-NAALADL1 antibody



Catalog Number: 101564

Product name

Anti-NAALADL1 antibody

Immunogen

[Human NAALADL1 \(His Tag\) recombinant protein](#)

Specificity

Human NAALADL1 / NAALADase L

Antibody description

Rabbit monoclonal to NAALADL1

Preparation

This antibody was obtained from a rabbit immunized with purified, recombinant Human NAALADL1 (rh NAALADL1; NP_005459.2; Pro 29-Leu 740).

Formulation

0.2 μ m filtered solution in PBS with 5% trehalose

Storage

This antibody can be stored at 2°C-8°C for one month without detectable loss of activity. Antibody products are stable for twelve months from date of receipt when stored at -20°C to -80°C.

Preservative-Free.

Sodium azide is recommended to avoid contamination (final concentration 0.05%-0.1%). It is toxic to cells and should be disposed of properly. Avoid repeated freeze-thaw cycles.

Clonality

Monoclonal

Ig Type

Rabbit IgG

Applications

ELISA, WB

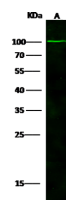
Dilutions

WB: 20-30 μ g/ml

ELISA: 0.1-0.2 μ g/mL

This antibody can be used at 0.1-0.2 μ g/mL with the appropriate secondary reagents to detect Human NAALADL1. The detection limit for Human NAALADL1 is approximately 0.00245 ng/well.

Validations



Lanes	A
Items	
Sample (whole cell lysate)	293T
Sample Volume (μ g/lane)	30
Gel	13% SDS-PAGE reducing gel
Recommended Concentration	20-30 μ g/ml
Secondary Antibody	Dylight 800-labeled Antibody to Rabbit IgG (H+L), at 1:5000 dilution. Developed using Odyssey imaging system.
Explanation	Predicted band size : 81 kDa Observed band size : 100 kDa

NAALADL1 / NAALADase L Antibody, Rabbit MAb, Western blot