

Anti-CXCL12 / SDF-1 beta antibody



Catalog Number: 101052

Product name

Anti-CXCL12 / SDF-1 beta antibody

Immunogen

[Human CXCL12 / SDF-1 beta recombinant protein](#)

Specificity

Human CXCL12 / SDF-1 beta

Antibody description

Rabbit polyclonal to CXCL12 / SDF-1 beta

Preparation

Produced in rabbits immunized with purified, recombinant Human CXCL12 / SDF-1 beta (rh CXCL12 / SDF-1 beta; P48061-1; Lys22-Met93). CXCL12 / SDF-1 beta specific IgG was purified by Human CXCL12 / SDF-1 beta affinity chromatography.

Formulation

0.2 µm filtered solution in PBS

Storage

This antibody can be stored at 2°C-8°C for one month without detectable loss of activity. Antibody products are stable for twelve months from date of receipt when stored at -20°C to -80°C.

Preservative-Free.

Sodium azide is recommended to avoid contamination (final concentration 0.05%-0.1%). It is toxic to cells and should be disposed of properly. Avoid repeated freeze-thaw cycles.

Clonality

Polyclonal

Ig Type

Rabbit IgG

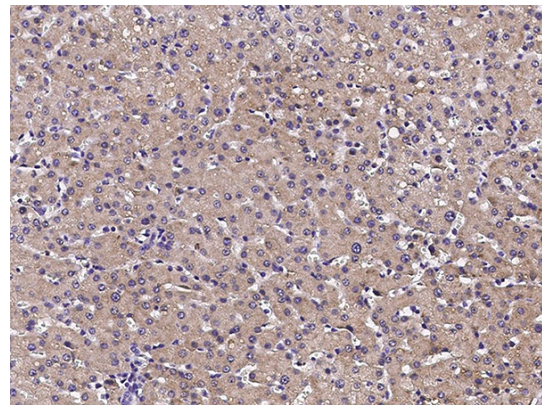
Applications

IHC-P

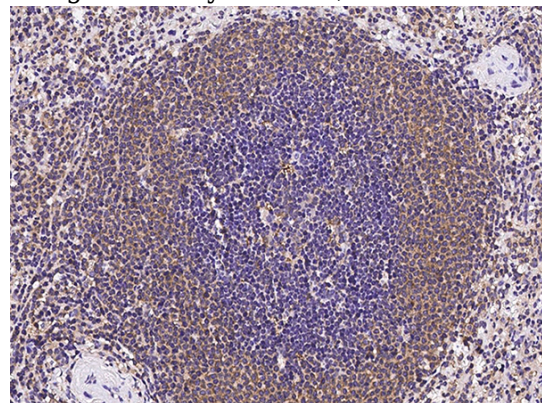
Dilutions

IHC-P: 0.1-2 µg/ml

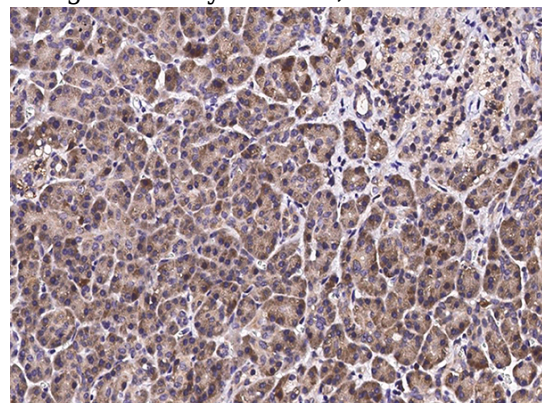
Validations



CXCL12 / SDF-1 beta Antibody, Rabbit PAb, Antigen Affinity Purified, Immunohistochemistry



CXCL12 / SDF-1 beta Antibody, Rabbit PAb, Antigen Affinity Purified, Immunohistochemistry



Anti-CXCL12 / SDF-1 beta antibody



Catalog Number: 101052

CXCL12 / SDF-1 beta Antibody, Rabbit PAb,

Antigen Affinity Purified, Immunohistochemistry