

# Anti-PSGL-1/CD162 antibody



Catalog Number: 100964

## Product name

Anti-PSGL-1/CD162 antibody

## Immunogen

[Mouse PSGL-1/CD162 recombinant protein](#)

## Specificity

Mouse PSGL-1 / CD162

## Antibody description

Rabbit polyclonal to PSGL-1/CD162

## Preparation

Produced in rabbits immunized with purified, recombinant Mouse PSGL-1 / CD162 (rh PSGL-1 / CD162; Q62170; Met1-Cys307). PSGL-1 / CD162 specific IgG was purified by Mouse PSGL-1 / CD162 affinity chromatography.

## Formulation

0.2 µm filtered solution in PBS

## Storage

This antibody can be stored at 2°C-8°C for one month without detectable loss of activity. Antibody products are stable for twelve months from date of receipt when stored at -20°C to -80°C.

Preservative-Free.

Sodium azide is recommended to avoid contamination (final concentration 0.05%-0.1%). It is toxic to cells and should be disposed of properly. Avoid repeated freeze-thaw cycles.

## Clonality

Polyclonal

## Ig Type

Rabbit IgG

## Applications

ELISA, IHC-P

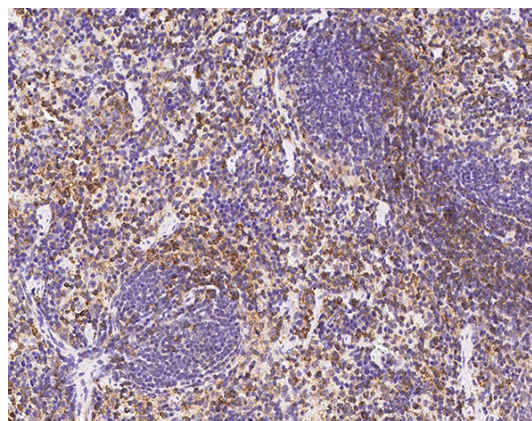
## Dilutions

ELISA:0.1-0.2 µg/mL

This antibody can be used at 0.1-0.2 µg/mL with the appropriate secondary reagents to detect Mouse PSGL-1 / CD162. The detection limit for Mouse PSGL-1 / CD162 is < 0.039 ng/well.

IHC-P: 0.1-1 µg/ml

## Validations



PSGL-1 / CD162 Antibody, Rabbit PAb, Antigen Affinity Purified, Immunohistochemistry