

Anti-UBE2M antibody



Catalog Number: 100939

Product name

Anti-UBE2M antibody

Specificity

Human UBE2M

Antibody description

Rabbit polyclonal to UBE2M

Preparation

Produced in rabbits immunized with a synthetic peptide corresponding to the center region of the Human UBE2M, and purified by antigen affinity chromatography.

Formulation

0.2 μ m filtered solution in PBS

Storage

This antibody can be stored at 2°C-8°C for one month without detectable loss of activity. Antibody products are stable for twelve months from date of receipt when stored at -20°C to -80°C.

Preservative-Free.

Sodium azide is recommended to avoid contamination (final concentration 0.05%-0.1%). It is toxic to cells and should be disposed of properly. Avoid repeated freeze-thaw cycles.

Clonality

Polyclonal

Ig Type

Rabbit IgG

Applications

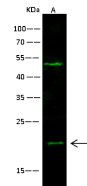
WB, IP

Dilutions

WB: 10-20 μ g/ml

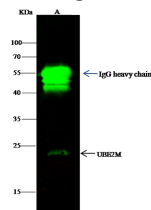
IP: 1-4 uL/mg of lysate

Validations



Lanes	A
Items	
Sample (whole cell lysate)	Jurkat
Sample Volume (μ g/lane)	30
Gel	13% SDS-PAGE reducing gel
Recommended concentration	10-20 μ g/ml
Secondary Antibody	Dylight 800-labeled Antibody to Rabbit IgG (1:1), at 1:5000 dilution
Developed using Odyssey imaging system.	
Explanation	Predicted band size : 21 kDa Observed band size : 21 kDa Additional bands at : 50 kDa(We are unsure as to the identity of these extra bands.)

UBE2M Antibody, Rabbit PAb, Antigen Affinity



Lanes	A
Items	
Sample (whole cell lysate)	Jurkat
Sample quantity	0.5 mg
IP antibody quantity	2 μ g
Immunomagnetic beads Protein G	60 μ g
Gel	13% SDS-PAGE reducing gel
Primary antibody	KL11-SMCC-sinoA1017 antibody at 10 μ g/ml
Secondary antibody	Dylight 800-labeled antibody to rabbit IgG (1:1), at 1:5000 dilution

Purified, Western blot

UBE2M Antibody, Rabbit PAb, Antigen Affinity

Purified, Immunoprecipitation