

# Anti-CEBPA antibody



Catalog Number: 100913

## Product name

Anti-CEBPA antibody

## Specificity

Human CEBPA

## Antibody description

Rabbit polyclonal to CEBPA

## Preparation

Produced in rabbits immunized with purified, a synthetic peptide corresponding to the C-terminus of the human CEBPA. Human CEBPA specific IgG was purified by human CEBPA affinity chromatography.

## Formulation

0.2 µm filtered solution in PBS

## Storage

This antibody can be stored at 2°C-8°C for one month without detectable loss of activity. Antibody products are stable for twelve months from date of receipt when stored at -20°C to -80°C.

Preservative-Free.

Sodium azide is recommended to avoid contamination (final concentration 0.05%-0.1%). It is toxic to cells and should be disposed of properly. Avoid repeated freeze-thaw cycles.

## Clonality

Polyclonal

## Ig Type

Rabbit IgG

## Applications

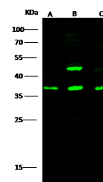
WB, IP

## Dilutions

WB: 5-10 µg/ml

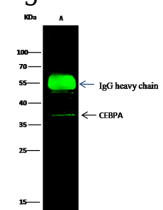
IP: 4-6 µg/mg of lysate

## Validations



Lanes	A	B	C
Items			
Sample (whole cell lysate)	U937	Jurkat	MLF7
Sample Volume (µg/lane)	30	30	30
Gel	13% SDS-PAGE reducing gel		
Recommended Concentration	5-10 µg/ml		
Secondary Antibody	DyLight 800 labeled Antibody to Rabbit IgG (H+L), at 1:5000 dilution.		
Explanation	Developed using Odyssey imaging system. Predicted band size: 43 kDa Observed band size: 37 kDa Additional bands at: 48 kDa [We are unsure as to the identity of these extra bands. They are possible non-specific bindings].		

## CEBPA Antibody, Rabbit PAb, Antigen Affinity



Lanes	A
Items	
Sample (whole cell lysate)	HepG2
Sample quantity	0.5 mg
IP antibody quantity	2 µg
Protein G agarose	15 µl of 50% Protein G Agarose
Gel	13% SDS-PAGE reducing gel
Primary antibody	K115MCC-sino364 antibody at 5 µg/ml
Secondary antibody	DyLight 800-labeled antibody to rabbit IgG (H+L), at 1:5000 dilution.

Purified, Western blot

CEBPA Antibody, Rabbit PAb, Antigen Affinity  
Purified, Immunoprecipitation