

# Anti-CD8B / P37 / LEU2 antibody



Catalog Number: 100851

## Product name

Anti-CD8B / P37 / LEU2 antibody

## Immunogen

[Human CD8B / P37 / LEU2 recombinant protein](#)

## Specificity

Human CD8B / P37 / LEU2

## Antibody description

Rabbit polyclonal to CD8B / P37 / LEU2

## Preparation

Produced in rabbits immunized with purified, recombinant Human CD8B / P37 / LEU2 (rh CD8B / P37 / LEU2; P10966-1; Met1-Pro170). CD8B / P37 / LEU2 specific IgG was purified by Human CD8B / P37 / LEU2 affinity chromatography.

## Formulation

0.2 µm filtered solution in PBS

## Storage

This antibody can be stored at 2°C-8°C for one month without detectable loss of activity. Antibody products are stable for twelve months from date of receipt when stored at -20°C to -80°C.

Preservative-Free.

Sodium azide is recommended to avoid contamination (final concentration 0.05%-0.1%). It is toxic to cells and should be disposed of properly. Avoid repeated freeze-thaw cycles.

## Clonality

Polyclonal

## Ig Type

Rabbit IgG

## Applications

ELISA, IHC-P

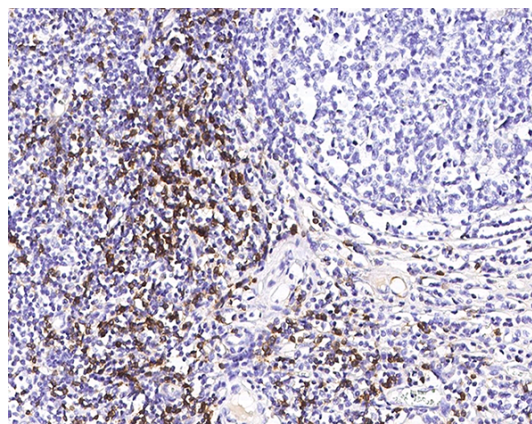
## Dilutions

ELISA:0.1-0.2 µg/mL

This antibody can be used at 0.1-0.2 µg/mL with the appropriate secondary reagents to detect Human CD8B / P37 / LEU2. The detection limit for Human CD8B / P37 / LEU2 is < 0.039 ng/well.

IHC-P: 0.5-3 µg/ml

## Validations



CD8B / P37 / LEU2 Antibody, Rabbit PAb, Antigen Affinity Purified, Immunohistochemistry