

# Anti-Raf-1/RAF1 antibody



Catalog Number: 100845

## Product name

Anti-Raf-1/RAF1 antibody

## Specificity

Human Raf-1

## Antibody description

Rabbit polyclonal to Raf-1/RAF1

## Preparation

Produced in rabbits immunized with a synthetic peptide corresponding to the center region of the Human Raf-1, and purified by antigen affinity chromatography.

## Formulation

0.2 µm filtered solution in PBS

## Storage

This antibody can be stored at 2°C-8°C for one month without detectable loss of activity. Antibody products are stable for twelve months from date of receipt when stored at -20°C to -80°C.

Preservative-Free.

Sodium azide is recommended to avoid contamination (final concentration 0.05%-0.1%). It is toxic to cells and should be disposed of

properly. Avoid repeated freeze-thaw cycles.

## Clonality

Polyclonal

## Ig Type

Rabbit IgG

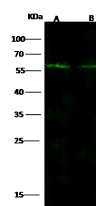
## Applications

WB

## Dilutions

WB: 5-20 µg/ml

## Validations



Items \ Lanes	A	B
Sample (whole cell lysate)	Jurkat	M31
Sample Volume (µg/lane)	30	30
Gel	13% SDS-PAGE reducing gel	
Recommended concentration	5-20 µg/ml	
Secondary Antibody	Dylight 800 Labeled Antibody to Rabbit IgG (1:1), at 1:5000 dilution.	
Developed using Odyssey imaging system.		
Explanation	Predicted band size : 73 kDa Observed band size : 57 kDa	

Raf-1 Antibody, Rabbit PAb, Antigen Affinity Purified, Western blot