

# Anti-Cystatin E / CST6 antibody



Catalog Number: 100833

## Product name

Anti-Cystatin E / CST6 antibody

## Immunogen

[Mouse Cystatin E / CST6 \(His Tag\) recombinant protein](#)

## Specificity

Mouse Cystatin-E / CST6 / Cystatin-M / Cystatin-6

## Antibody description

Rabbit polyclonal to Cystatin E / CST6

## Preparation

Produced in rabbits immunized with purified, recombinant Mouse Cystatin-E / CST6 / Cystatin-M / Cystatin-6 (rM Cystatin-E / CST6 / Cystatin-M / Cystatin-6; NP\_082899.1; Met1-Ala152). Cystatin-E / CST6 / Cystatin-M / Cystatin-6 specific IgG was purified by Mouse Cystatin-E / CST6 / Cystatin-M / Cystatin-6 affinity chromatography.

## Formulation

0.2 µm filtered solution in PBS with 5% trehalose

## Storage

This antibody can be stored at 2°C-8°C for one month without detectable loss of activity. Antibody products are stable for twelve months from date of receipt when stored at -20°C to -80°C.

Preservative-Free.

Sodium azide is recommended to avoid contamination (final concentration 0.05%-0.1%). It is toxic to cells and should be disposed of properly. Avoid repeated freeze-thaw cycles.

## Clonality

Polyclonal

## Ig Type

Rabbit IgG

## Applications

ELISA, IHC-P

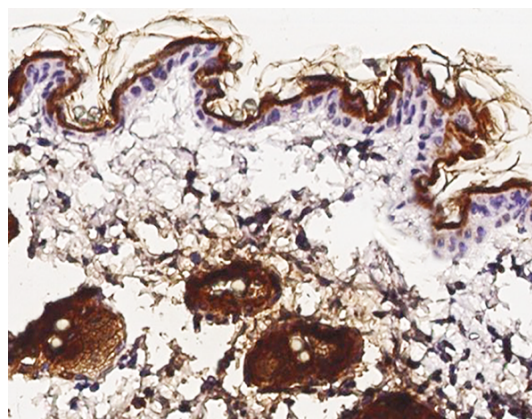
## Dilutions

ELISA: 0.1-0.2 µg/mL

This antibody can be used at 0.1-0.2 µg/mL with the appropriate secondary reagents to detect Mouse Cystatin-E / CST6 / Cystatin-M / Cystatin-6. The detection limit for Mouse Cystatin-E / CST6 / Cystatin-M / Cystatin-6 is approximately 0.00975 ng/well.

IHC-P: 0.1-2 µg/mL

## Validations



Cystatin E / CST6 Antibody, Rabbit PAb, Antigen Affinity Purified, Immunohistochemistry

Immunochemical staining of mouse CST6 in mouse skin with rabbit polyclonal antibody (1 µg/mL, formalin-fixed paraffin embedded sections).