

Catalog Number: 100828

Product name

Anti-GATE-16 / GABARAPL2 antibody

Immunogen

[Human GATE-16 / GABARAPL2 \(His Tag\) recombinant protein](#)

Specificity

Human GATE-16 / GABARAPL2

Antibody description

Rabbit polyclonal to GATE-16 / GABARAPL2

Preparation

Produced in rabbits immunized with purified, recombinant Human GATE-16 / GABARAPL2 (rh GATE-16 / GABARAPL2; P60520; Met1-Phe117). GATE-16 / GABARAPL2 specific IgG was purified by Human GATE-16 / GABARAPL2 affinity chromatography.

Formulation

0.2 µm filtered solution in PBS

Storage

This antibody can be stored at 2°C-8°C for one month without detectable loss of activity. Antibody products are stable for twelve months from date of receipt when stored at -20°C to -80°C.

Preservative-Free.

Sodium azide is recommended to avoid contamination (final concentration 0.05%-0.1%). It is toxic to cells and should be disposed of properly. Avoid repeated freeze-thaw cycles.

Clonality

Polyclonal

Ig Type

Rabbit IgG

Applications

ELISA, IHC-P

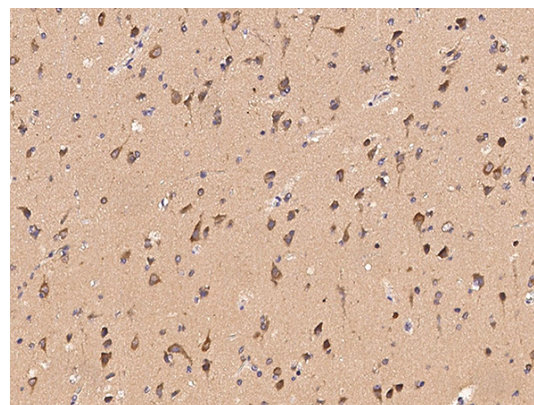
Dilutions

ELISA: 0.1-0.2 µg/mL

This antibody can be used at 0.1-0.2 µg/mL with the appropriate secondary reagents to detect Human GATE-16 / GABARAPL2. The detection limit for Human GATE-16 / GABARAPL2 is < 0.039 ng/well.

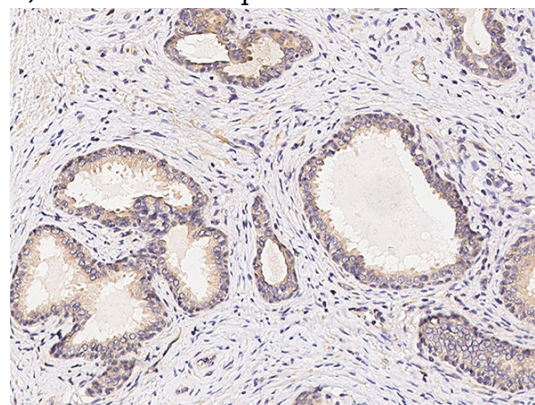
IHC-P: 0.1-2 µg/mL

Validations



GATE-16 / GABARAPL2 Antibody, Rabbit PAb, Antigen Affinity Purified

Immunochemical staining of human GABARAPL2 in human brain with rabbit polyclonal antibody (0.5 µg/mL, formalin-fixed paraffin embedded



sections).

GATE-16 / GABARAPL2 Antibody, Rabbit PAb,

Anti-GATE-16 / GABARAPL2 antibody



Catalog Number: 100828

Antigen Affinity Purified

in human prostate with rabbit polyclonal antibody
(0.5 µg/mL, formalin-fixed paraffin embedded
sections).

Immunochemical staining of human GABARAPL2