

Anti-PHYH antibody



Catalog Number: 100816

Product name

Anti-PHYH antibody

Immunogen

[Human PHYH recombinant protein](#)

Specificity

Human PHYH

Antibody description

Rabbit polyclonal to PHYH

Preparation

Produced in rabbits immunized with purified, recombinant Human PHYH (rh PHYH; O14832; Ser31-Leu338). PHYH specific IgG was purified by Human PHYH affinity chromatography.

Formulation

0.2 µm filtered solution in PBS with 5% trehalose

Storage

This antibody can be stored at 2°C-8°C for one month without detectable loss of activity. Antibody products are stable for twelve months from date of receipt when stored at -20°C to -80°C.

Preservative-Free.

Sodium azide is recommended to avoid contamination (final concentration 0.05%-0.1%). It is toxic to cells and should be disposed of properly. Avoid repeated freeze-thaw cycles.

Clonality

Polyclonal

Ig Type

Rabbit IgG

Applications

ELISA, IHC-P

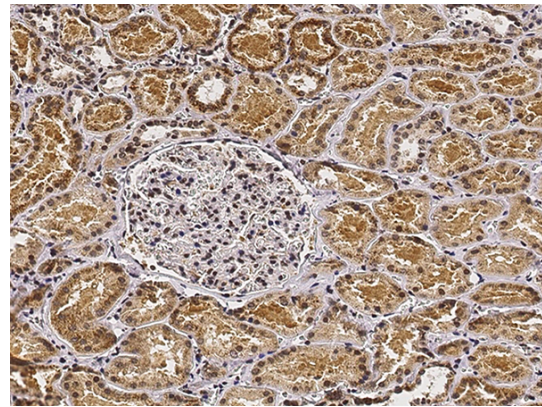
Dilutions

ELISA: 0.1-0.2 µg/mL

This antibody can be used at 0.1-0.2 µg/mL with the appropriate secondary reagents to detect Human PHYH. The detection limit for Human PHYH is approximately 0.00975 ng/well.

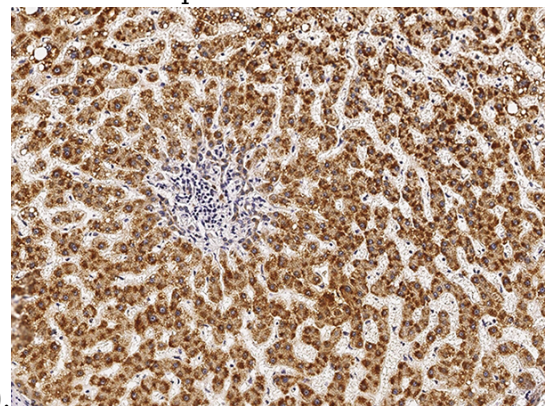
IHC-P: 0.1-2 µg/mL

Validations



PHYH Antibody, Rabbit PAb, Antigen Affinity Purified, Immunohistochemistry

Immunochemical staining of human PHYH in human kidney with rabbit polyclonal antibody (1 µg/mL, formalin-fixed paraffin embedded



sections).

PHYH Antibody, Rabbit PAb, Antigen Affinity Purified, Immunohistochemistry

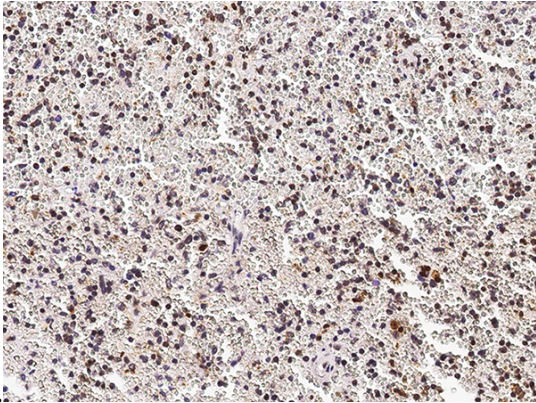
Immunochemical staining of human PHYH in

Anti-PHYH antibody



Catalog Number: 100816

human liver with rabbit polyclonal antibody (1 $\mu\text{g}/\text{mL}$, formalin-fixed paraffin embedded



PHYH Antibody, Rabbit PAb, Antigen Affinity Purified, Immunohistochemistry

Immunochemical staining of human PHYH in human spleen with rabbit polyclonal antibody (1 $\mu\text{g}/\text{mL}$, formalin-fixed paraffin embedded sections).

sections).