

Anti-CD1C antibody



Catalog Number: 100792

Product name

Anti-CD1C antibody

Specificity

human CD1C

Antibody description

Rabbit polyclonal to CD1C

Preparation

Produced in rabbits immunized with A synthetic peptide corresponding to the N-terminus of the human CD1C, and purified by antigen affinity chromatography.

Formulation

0.2 μ m filtered solution in PBS

Storage

This antibody can be stored at 2°C-8°C for one month without detectable loss of activity. Antibody products are stable for twelve months from date of receipt when stored at -20°C to -80°C.

Preservative-Free.

Sodium azide is recommended to avoid contamination (final concentration 0.05%-0.1%). It is toxic to cells and should be disposed of

properly. Avoid repeated freeze-thaw cycles.

Clonality

Polyclonal

Ig Type

Rabbit IgG

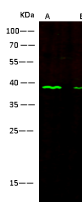
Applications

WB

Dilutions

WB: 10-30 μ g/ml

Validations



Items	Lanes	A	B
Sample (Membrane lysate)		COS7	MCF7
Sample Volume (μ g/lane)		30	30
Gel	13% SDS-PAGE reducing gel		
Recommended Concentration	10-30 μ g/ml		
Secondary Antibody	Dylight 800 labeled Antibody to Rabbit IgG (H+L), at 1:5000 dilution. Developed using Odyssey imaging system.		
Explanation	Predicted band size : 38 kDa Observed band size : 38 kDa		

CD1C Antibody, Rabbit PAb, Antigen Affinity Purified, Western blot