

Anti-KYNU antibody



Catalog Number: 100776

Product name

Anti-KYNU antibody

Immunogen

[Human KYNU \(His Tag\) recombinant protein](#)

Specificity

Human KYNU

Antibody description

Rabbit polyclonal to KYNU

Preparation

Produced in rabbits immunized with purified, recombinant Human KYNU (rh KYNU; Q16719; Met1-Asn465). KYNU specific IgG was purified by Human KYNU affinity chromatography.

Formulation

0.2 μ m filtered solution in PBS

Storage

This antibody can be stored at 2°C-8°C for one month without detectable loss of activity. Antibody products are stable for twelve months from date of receipt when stored at -20°C to -80°C.

Preservative-Free.

Sodium azide is recommended to avoid contamination (final concentration 0.05%-0.1%). It is toxic to cells and should be disposed of properly. Avoid repeated freeze-thaw cycles.

Clonality

Polyclonal

Ig Type

Rabbit IgG

Applications

ELISA, WB, IP

Dilutions

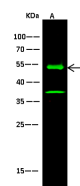
WB: 5-10 μ g/ml

ELISA: 0.1-0.2 μ g/mL

This antibody can be used at 0.1-0.2 μ g/mL with the appropriate secondary reagents to detect Human KYNU. The detection limit for Human KYNU is < 0.039 ng/well.

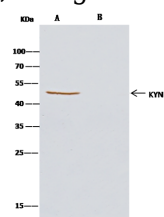
IP: 1-4 μ g/mg of lysate

Validations



Lanes	A
Sample (whole cell lysate)	A549
Sample Volume (μ g/lane)	30
Gel	13% SDS-PAGE reducing gel
Recommended Concentration	5-10 μ g/ml
Secondary Antibody	Dylight 800-labeled Antibody to Rabbit IgG (H+L), at 1:5000 dilution.
Developed using Odyssey imaging system.	
Explanation	Predicted band size : 52 kDa Observed band size : 52 kDa Additional bands at : 37 kDa (We are unsure as to the identity of these extra bands. They are possible non-specific bindings).

KYNU Antibody, Rabbit PAb, Antigen Affinity



Lanes	A	B
Sample (whole cell lysate)	A549	
Sample quantity	0.5 mg	
IP antibody type	KYNU-RP02	Rabbit Blank IgG
IP antibody quantity	2 μ g	
Protein G agarose	15 μ l of 50% Protein G Agarose	
Gel	13% SDS-PAGE reducing gel	
Primary antibody	KYNU antibody at 2 μ g/ml	
Secondary antibody	Clear-Blue [®] IP Detection Reagent (HRP) at 1:1000 dilution.	

Purified, Western blot

KYNU Antibody, Rabbit PAb, Antigen Affinity
Purified, Immunoprecipitation