

Anti-PIK3CA antibody



Catalog Number: 100769

Product name

Anti-PIK3CA antibody

Specificity

Human PIK3CA

Antibody description

Rabbit polyclonal to PIK3CA

Preparation

Produced in rabbits immunized with a synthetic peptide corresponding to the center region of the Human PIK3CA, and purified by antigen affinity chromatography.

Formulation

0.2 µm filtered solution in PBS

Storage

This antibody can be stored at 2°C-8°C for one month without detectable loss of activity. Antibody products are stable for twelve months from date of receipt when stored at -20°C to -80°C.

Preservative-Free.

Sodium azide is recommended to avoid contamination (final concentration 0.05%-0.1%). It is toxic to cells and should be disposed of properly. Avoid repeated freeze-thaw cycles.

Clonality

Polyclonal

Ig Type

Rabbit IgG

Applications

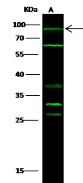
WB, IF, ICC/IF

Dilutions

WB: 10-20 µg/ml

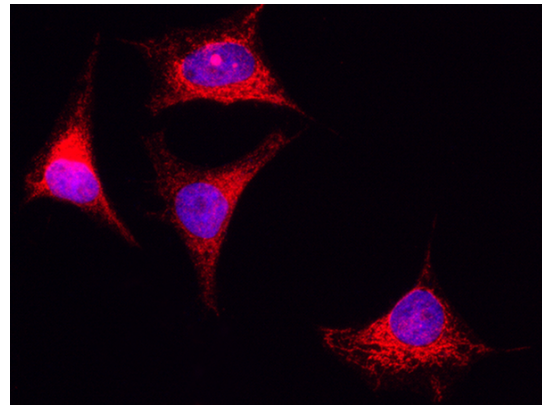
ICC/IF: 0.5-1.5 µg/mL

Validations



Items	Lanes	A
Sample		Mouse: heart tissue lysate
Sample Volume (µg/lane)		30
Gel		13% SDS-PAGE reducing gel
Recommended Concentration		10-20µg/ml
Secondary Antibody		Dylight 800 labeled Antibody to Rabbit IgG (1:1), at 1:5000 dilution.
Developed using Odyssey imaging system		
Explanation		Predicted band size: 124 kDa Observed band size: 90 kDa Additional bands at: 62 kDa, 37kDa, 32kDa and 27 kDa [We are unsure as to the identity of these extra bands. They are possible non-specific bindings].

PIK3CA Antibody, Rabbit PAb, Antigen Affinity Purified, Western blot



PIK3CA Antibody, Rabbit PAb, Antigen Affinity Purified, Immunofluorescence

Immunofluorescence staining of PIK3CA in HeLa cells. Cells were fixed with 4% PFA, permeabilized with 0.3% Triton X-100 in PBS, blocked with 10% serum, and incubated with rabbit anti-human PIK3CA polyclonal antibody (1 µg/ml) at 4°C overnight. Then cells wer