

# Anti-DCX antibody



Catalog Number: 100745

## Product name

Anti-DCX antibody

## Immunogen

[Human DCX \(aa 45-150, GST Tag\) recombinant protein](#)

## Specificity

Human DCX

## Antibody description

Rabbit polyclonal to DCX

## Preparation

Produced in rabbits immunized with purified, recombinant Human DCX (rh DCX; O43602-2; Ala45-Val150). DCX specific IgG was purified by Human DCX affinity chromatography.

## Formulation

0.2 µm filtered solution in PBS with 5% trehalose

## Storage

This antibody can be stored at 2°C-8°C for one month without detectable loss of activity. Antibody products are stable for twelve months from date of receipt when stored at -20°C to -80°C.

Preservative-Free.

Sodium azide is recommended to avoid contamination (final concentration 0.05%-0.1%). It is toxic to cells and should be disposed of properly. Avoid repeated freeze-thaw cycles.

## Clonality

Polyclonal

## Ig Type

Rabbit IgG

## Applications

ELISA, WB, IHC-P, IP

## Dilutions

WB: 10-20 µg/mL

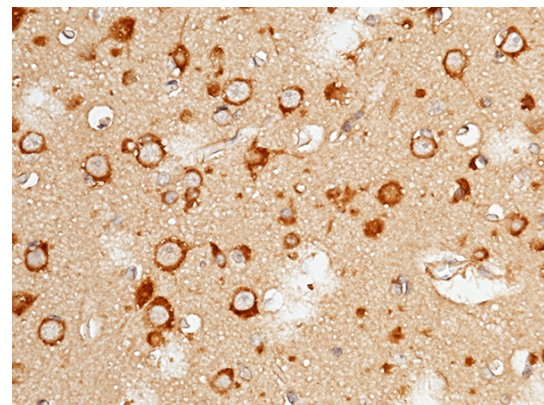
ELISA: 0.1-0.2 µg/mL

This antibody can be used at 0.1-0.2 µg/mL with the appropriate secondary reagents to detect Human DCX. The detection limit for Human DCX is approximately 0.00245 ng/well.

IHC-P: 0.1-2 µg/mL

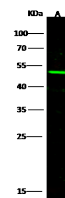
IP: 1-4 µg/mg of lysate

## Validations



DCX Antibody, Rabbit PAb, Antigen Affinity Purified, Immunohistochemistry

Immunochemical staining of human DCX in human brain with rabbit polyclonal antibody (1 µg/mL, formalin-fixed paraffin embedded sections).



Items	Lanes	A
Sample (whole cell lysate)		CG
Sample Volume (µg/lane)		30
Gel		13%SDS-PAGE reducing gel
Recommended Concentration		10-20 µg/ml
Secondary Antibody		DyLight 800 labeled Antibody to Rabbit IgG (1:1), at 1:5000 dilution. Developed using Odyssey imaging system.
Explanation		Predicted band size : 49 kDa Observed band size : 49 kDa

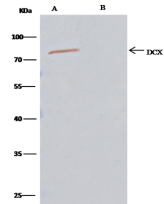
DCX Antibody, Rabbit PAb, Antigen Affinity

# Anti-DCX antibody



Catalog Number: 100745

## Purified, Western blot



DCX Antibody, Rabbit PAb, Antigen Affinity Purified, Immunoprecipitation

Lanes	A	B
Sample (whole cell lysate)	HepG2	
Sample quantity	0.5 mg	
IP antibody type	GST-DCX-RP02	Rabbit blank IgG
IP antibody quantity	2 µg	
Protein G agarose	15 µl of 50% Protein G Agarose	
Gel	15% SDS-PAGE reducing gel	
Primary antibody	GST-DCX antibody at 10 µg/ml	
Secondary antibody	Clean-Blot® IP Detection Reagent (HRP) at 1:1000 dilution	