

# Anti-SETD7/SET7/9 antibody



Catalog Number: 100697

## Product name

Anti-SETD7/SET7/9 antibody

## Immunogen

[Human SETD7/SET7/9 \(His Tag\) recombinant protein](#)

## Specificity

Human SETD7 / SET7 / 9

## Antibody description

Mouse monoclonal to SETD7/SET7/9

## Preparation

This antibody was produced from a hybridoma resulting from the fusion of a mouse myeloma with B cells obtained from a mouse immunized with purified, recombinant Human SETD7 / SET7 / 9 (rh SETD7 / SET7 / 9; NP\_085151.1; Asp2-Lys366). The IgG fraction of the cell culture supernatant was purified by Protein A affinity chromatography.

## Formulation

0.2 µm filtered solution in PBS with 5% treha

## Storage

This antibody can be stored at 2°C-8°C for one month without detectable loss of activity. Antibody products are stable for twelve months from date of

receipt when stored at -20°C to -80°C.

Preservative-Free.

Sodium azide is recommended to avoid contamination (final concentration 0.05%-0.1%). It is toxic to cells and should be disposed of properly. Avoid repeated freeze-thaw cycles.

## Clonality

Monoclonal

## Ig Type

Mouse IgG1

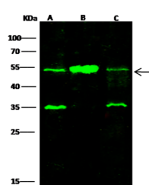
## Applications

WB

## Dilutions

WB: 10-20µg/ml

## Validations



Lanes	A	B	C
Items			
Sample (whole cell lysate)	Hela	MCF7	NIH3T3
Sample Volume (µg/lane)	60	60	60
Gel	13% SDS-PAGE reducing gel		
Recommended Concentration	10-20µg/ml		
Secondary Antibody	Dylight 800-labeled Antibody To Mouse IgG (H+L), at 1:7500 dilution.		
Explanation	Developed using Odyssey imaging system. Predicted band size : 41 kDa Observed band size : 53 kDa Additional bands at : 35 kDa (We are unsure as to the identity of these extra bands. They are possible non-specific bindings).		

SETD7 / SET7 / 9 Antibody, Mouse MAb, Western blot