

# Anti-IFI30 antibody



Catalog Number: 100668

## Product name

Anti-IFI30 antibody

## Immunogen

[Human IFI30 \(His Tag\) recombinant protein](#)

## Specificity

Human IFI30

## Antibody description

Rabbit polyclonal to IFI30

## Preparation

Produced in rabbits immunized with purified, recombinant Human IFI30 (rh IFI30; P13284; Met1-Lys243). IFI30 specific IgG was purified by Human IFI30 affinity chromatography.

## Formulation

0.2  $\mu$ m filtered solution in PBS with 5% trehalose

## Storage

This antibody can be stored at 2°C-8°C for one month without detectable loss of activity. Antibody products are stable for twelve months from date of receipt when stored at -20°C to -80°C.

Preservative-Free.

Sodium azide is recommended to avoid contamination (final concentration 0.05%-0.1%). It is toxic to cells and should be disposed of properly. Avoid repeated freeze-thaw cycles.

## Clonality

Polyclonal

## Ig Type

Rabbit IgG

## Applications

ELISA, WB

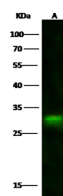
## Dilutions

WB: 10-20  $\mu$ g/mL

ELISA: 0.1-0.2  $\mu$ g/mL

This antibody can be used at 0.1-0.2  $\mu$ g/mL with the appropriate secondary reagents to detect Human IFI30. The detection limit for Human IFI30 is approximately 0.0049 ng/well.

## Validations



Items	Lanes	A
Sample (whole cell lysate)		HepG2
Sample Volume ( $\mu$ g/lane)		30
Gel		13% SDS-PAGE reducing gel
Recommended Concentration		10-20 $\mu$ g/ml
Secondary Antibody		Dylight 800-labeled Antibody To Rabbit IgG (H+L), at 1:5000 dilution.

IFI30 Antibody, Rabbit PAb, Antigen Affinity Purified, Western blot