

Anti-EphB3/HEK2/Eph Receptor B3 antibody



Catalog Number: 100661

Product name

Anti-EphB3/HEK2/Eph Receptor B3 antibody

Immunogen

[Rat EphB3/HEK2/Eph Receptor B3 \(His Tag\) recombinant protein](#)

Specificity

Rat EphB3 / HEK2 / Eph Receptor B3

Antibody description

Rabbit polyclonal to EphB3/HEK2/Eph Receptor B3

Preparation

Produced in rabbits immunized with purified, recombinant Rat EphB3 / HEK2 / Eph Receptor B3 (rR EphB3 / HEK2 / Eph Receptor B3; NP_001099338.1; Met1-Thr537). EphB3 / HEK2 / Eph Receptor B3 specific IgG was purified by Rat EphB3 / HEK2 / Eph Receptor B3 affinity chromatography.

Formulation

0.2 μ m filtered solution in PBS

Storage

This antibody can be stored at 2°C-8°C for one month without detectable loss of activity. Antibody products are stable for twelve months from date of receipt when stored at -20°C to -80°C.

Preservative-Free.

Sodium azide is recommended to avoid contamination (final concentration 0.05%-0.1%). It is toxic to cells and should be disposed of properly. Avoid repeated freeze-thaw cycles.

Clonality

Polyclonal

Ig Type

Rabbit IgG

Applications

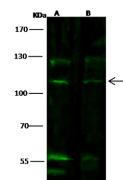
WB, IP

Dilutions

WB: 10-20 μ g/ml

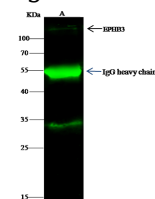
IP: 1-4 uL/mg of lysate

Validations



Lanes	A	B
Items		
Sample	Hela (whole cell lysate)	Mouse heart tissue lysate
Sample Volume (µg/lane)	30	30
Gel	7.5% SDS-PAGE reducing gel	
Recommended concentration	10-20 µg/ml	
Secondary Antibody	Dylight 800 labeled Antibody to Rabbit IgG (H+L), at 1:5000 dilution.	
Developed using Odyssey imaging system.		
Explanation	Predicted band size : 110 kDa Observed band size : 110 kDa Additional bands at : 125 kDa, 56 kDa and 50 kDa (We are unsure as to the identity of these extra bands.)	

EphB3 / HEK2 / Eph Receptor B3 Antibody, Rabbit PAb, Antigen Affinity Purified, Western blot



Lanes	A
Items	
Sample (whole-cell lysate)	NIH-3T3
Sample quantity	0.5 mg
IP antibody quantity	2 μ g
Immunoprecipitate (ug)	60 ug
Gel	15% SDS-PAGE reducing gel
Primary antibody	RAT EPHB3-EPH antibody at 10 μ g/ml
Secondary antibody	Dylight 800-labeled antibody to rabbit IgG (H+L), at 1:5000 dilution

EphB3 / HEK2 / Eph Receptor B3 Antibody, Rabbit PAb, Antigen Affinity Purified, Immunoprecipitation