

# Anti-PSPH antibody



Catalog Number: 100656

## Product name

Anti-PSPH antibody

## Immunogen

[Human PSPH recombinant protein](#)

## Specificity

Human PSPH

## Antibody description

Rabbit monoclonal to PSPH

## Preparation

This antibody was obtained from a rabbit immunized with purified, recombinant Human PSPH (rh PSPH; P78330; Met1-Glu225).

## Formulation

0.2 µm filtered solution in PBS with 5% trehalose

## Storage

This antibody can be stored at 2°C-8°C for one month without detectable loss of activity. Antibody products are stable for twelve months from date of receipt when stored at -20°C to -80°C.

Preservative-Free.

Sodium azide is recommended to avoid contamination (final concentration 0.05%-0.1%). It is toxic to cells and should be disposed of properly. Avoid repeated freeze-thaw cycles.

## Clonality

Monoclonal

## Ig Type

Rabbit IgG

## Applications

ELISA, WB, IP

## Dilutions

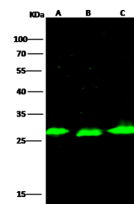
WB: 2-10 µg/ml

ELISA: 0.1-0.2 µg/mL

This antibody can be used at 0.1-0.2 µg/mL with the appropriate secondary reagents to detect Human PSPH. The detection limit for Human PSPH is 0.00245 µg/well.

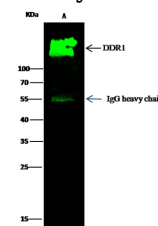
IP: 1-4 µg/mg of lysate

## Validations



Lanes	A	B	C
Sample (whole cell lysate)	MCF7	K562	HepG2
Sample Volume (µg/lane)	30	30	30
Gel	13% SDS-PAGE reducing gel		
Recommended Concentration	2-10 µg/ml		
Secondary Antibody	Dylight 800-labeled Antibody to Rabbit IgG (H+L), at 1:5000 dilution.		
Developed using Odyssey imaging system.			
Explanation	Predicted band size : 25 kDa Observed band size : 27 kDa		

## PSPH Antibody, Rabbit MAb, Western blot



Lanes	A
Sample (whole cell lysate)	MCF7
Sample quantity	0.5 µg
IP antibody quantity	2 µg
Protein G agarose	15 µl of 50% Protein G Agarose
Gel	13% SDS-PAGE reducing gel
Primary antibody	DOR1 antibody at 5 µg/ml [Cat# 10730-R203]
Secondary antibody	Dylight 800-labeled antibody to rabbit IgG (H+L), at 1:5000 dilution.

## PSPH Antibody, Rabbit MAb, Immunoprecipitation