

Anti-CCL20/MIP-3 alpha/MIP3A antibody



Catalog Number: 100648

Product name

Anti-CCL20/MIP-3 alpha/MIP3A antibody

Immunogen

[Human CCL20/MIP-3 alpha/MIP3A \(His Tag\) recombinant protein](#)

Specificity

Human CCL20 / MIP-3 alpha / MIP3A

Antibody description

Rabbit polyclonal to CCL20/MIP-3 alpha/MIP3A

Preparation

Produced in rabbits immunized with purified, recombinant Human CCL20 / MIP-3 alpha / MIP3A (rh CCL20 / MIP-3 alpha / MIP3A; P78556-1; Ala27-Met96). CCL20 / MIP-3 alpha / MIP3A specific IgG was purified by Human CCL20 / MIP-3 alpha / MIP3A affinity chromatography.

Formulation

0.2 µm filtered solution in PBS

Storage

This antibody can be stored at 2°C-8°C for one month without detectable loss of activity. Antibody products are stable for twelve months from date of receipt when stored at -20°C to -80°C.

Preservative-Free.

Sodium azide is recommended to avoid contamination (final concentration 0.05%-0.1%). It is toxic to cells and should be disposed of properly. Avoid repeated freeze-thaw cycles.

Clonality

Polyclonal

Ig Type

Rabbit IgG

Applications

ELISA, IHC-P

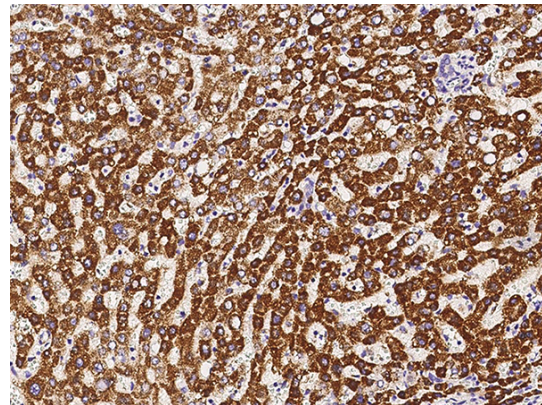
Dilutions

ELISA: 0.1-0.2 µg/ml

This antibody can be used at 0.1-0.2 µg/ml with the appropriate secondary reagents to detect Human CCL20 / MIP-3 alpha / MIP3A.

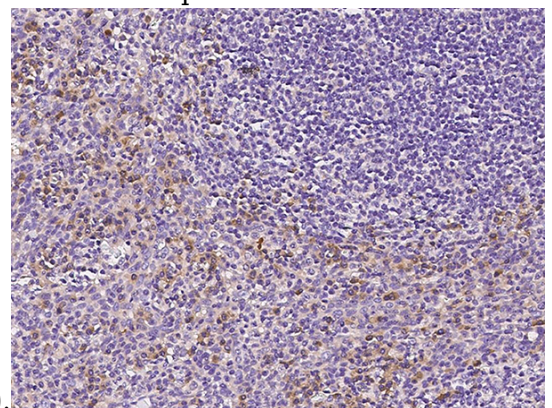
IHC-P: 0.5-2 µg/mL

Validations



CCL20 / MIP-3 alpha / MIP3A Antibody, Rabbit PAb, Antigen Affinity Purified, Immunohistochemistry

Immunochemical staining of human CCL20 in human liver with rabbit polyclonal antibody (1 µg/mL, formalin-fixed paraffin embedded



sections).

CCL20 / MIP-3 alpha / MIP3A Antibody, Rabbit PAb, Antigen Affinity Purified,

Anti-CCL20/MIP-3 alpha/MIP3A antibody



Catalog Number: 100648

Immunohistochemistry

human tonsil with rabbit polyclonal antibody (2 $\mu\text{g}/\text{mL}$, formalin-fixed paraffin embedded sections).

Immunochemical staining of human CCL20 in