

# Anti-PRTFDC1 antibody



Catalog Number: 100645

## Product name

Anti-PRTFDC1 antibody

## Immunogen

[Human PRTFDC1 \(His Tag\) recombinant protein](#)

## Specificity

Human PRTFDC1

## Antibody description

Mouse monoclonal to PRTFDC1

## Preparation

This antibody was produced from a hybridoma resulting from the fusion of a mouse myeloma with B cells obtained from a mouse immunized with purified, recombinant Human PRTFDC1 (rh PRTFDC1; Q9NRG1-1; Met1-Val225). The IgG fraction of the cell culture supernatant was purified by Protein A affinity chromatography.

## Formulation

0.2 µm filtered solution in PBS with 5% treha

## Storage

This antibody can be stored at 2°C-8°C for one month without detectable loss of activity. Antibody products are stable for twelve months from date of receipt when stored at -20°C to -80°C.

Preservative-Free.

Sodium azide is recommended to avoid contamination (final concentration 0.05%-0.1%). It is toxic to cells and should be disposed of properly. Avoid repeated freeze-thaw cycles.

## Clonality

Monoclonal

## Ig Type

Mouse IgG

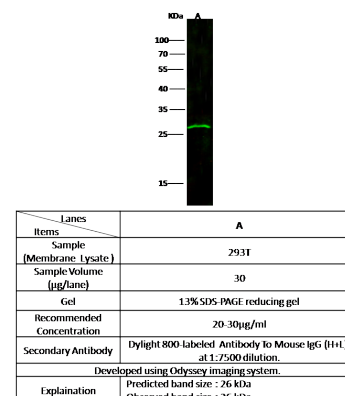
## Applications

WB

## Dilutions

WB: 20-30 µg/ml

## Validations



PRTFDC1 Antibody, Mouse MAb, Western blot