

# Anti-MBD3 antibody



Catalog Number: 100640

## Product name

Anti-MBD3 antibody

## Specificity

Human MBD3

## Antibody description

Rabbit polyclonal to MBD3

## Preparation

Produced in rabbits immunized with purified, recombinant Human MBD3 isoform 2 (O95983-2; Met 1-Val 259). MBD3 specific IgG was purified by Human MBD3 affinity chromatography.

## Formulation

0.2 µm filtered solution in PBS with 5% trehalose

## Storage

This antibody can be stored at 2°C-8°C for one month without detectable loss of activity. Antibody products are stable for twelve months from date of receipt when stored at -20°C to -80°C.

Preservative-Free.

Sodium azide is recommended to avoid contamination (final concentration 0.05%-0.1%). It is toxic to cells and should be disposed of properly. Avoid repeated freeze-thaw cycles.

## Clonality

Polyclonal

## Ig Type

Rabbit IgG

## Applications

ELISA, WB

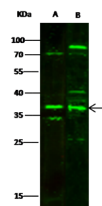
## Dilutions

WB: 5-10 µg/mL

ELISA: 0.1-0.2 µg/mL

This antibody can be used at 0.1-0.2 µg/mL µg/ml with the appropriate secondary reagents to detect Human MBD3.

## Validations



Items	Lanes	A	B
Sample (whole cell lysate)		Jurkat	293T
Sample Volume (µg/lane)		30	
Gel		13% SDS-PAGE reducing gel	
Recommended Concentration		5-10 µg/ml	
Secondary Antibody		Dylight 800-labeled Antibody To Rabbit IgG (H+), at 1:5000 dilution.	

MBD3 Antibody, Rabbit PAb, Antigen Affinity Purified, Western blot