

Anti-PDX1 antibody



Catalog Number: 100609

Product name

Anti-PDX1 antibody

Specificity

human PDX1

Antibody description

Rabbit polyclonal to PDX1

Preparation

Produced in rabbits immunized with A synthetic peptide corresponding to the N-terminus of the human PDX1, and purified by antigen affinity chromatography.

Formulation

0.2 µm filtered solution in PBS

Storage

This antibody can be stored at 2°C-8°C for one month without detectable loss of activity. Antibody products are stable for twelve months from date of receipt when stored at -20°C to -80°C.

Preservative-Free.

Sodium azide is recommended to avoid contamination (final concentration 0.05%-0.1%). It is toxic to cells and should be disposed of properly. Avoid repeated freeze-thaw cycles.

Clonality

Polyclonal

Ig Type

Rabbit IgG

Applications

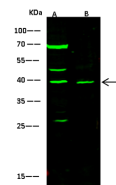
WB, IP

Dilutions

WB: 10-30 µg/ml

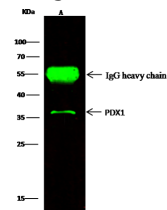
IP: 1-4 µg/mg of lysate

Validations



Lanes	A	B
Sample (whole cell lysate)	Jurkat	Caco-2
Sample Volume (µg/lane)	30	30
Gel	13% SDS-PAGE reducing gel	
Recommended Concentration	10-30 µg/ml	
Secondary Antibody	Dylight 800-labeled Antibody to Rabbit IgG (H+L), at 1:5000 dilution.	
Explanation	Developed using Odyssey imaging system. Predicted band size : 39 kDa Observed band size : 38 kDa Additional bands at : 68 kDa, 47 kDa and 27 kDa (We are unsure as to the identity of these extra bands. They are possible non-specific bindings).	

PDX1 Antibody, Rabbit PAb, Antigen Affinity



Lanes	A
Sample (whole cell lysate)	MCF-7
Sample quantity	0.5 mg
IP antibody quantity	2 µg
Protein G agarose	15 µl of 50% Protein G Agarose
Gel	13% SDS-PAGE reducing gel
Primary antibody	K11-SMCC-sinoA419 antibody at 10 µg/ml
Secondary antibody	Dylight 800-labeled antibody to rabbit IgG (H+L), at 1:5000 dilution

Purified, Western blot

PDX1 Antibody, Rabbit PAb, Antigen Affinity

Purified, Immunoprecipitation