

Anti-ADSL / Adenylosuccinate Lyase antibody



Catalog Number: 100607

Product name

Anti-ADSL / Adenylosuccinate Lyase antibody

Immunogen

[Human ADSL / Adenylosuccinate Lyase \(His Tag\) recombinant protein](#)

Specificity

Human ADSL / Adenylosuccinate Lyase

Antibody description

Rabbit polyclonal to ADSL / Adenylosuccinate Lyase

Preparation

Produced in rabbits immunized with purified, recombinant Human ADSL / Adenylosuccinate Lyase (rh ADSL / Adenylosuccinate Lyase; P30566-1; Met1-Leu484). ADSL / Adenylosuccinate Lyase specific IgG was purified by Human ADSL / Adenylosuccinate Lyase affinity chromatography.

Formulation

0.2 μ m filtered solution in PBS with 5% trehalose

Storage

This antibody can be stored at 2°C-8°C for one month without detectable loss of activity. Antibody products are stable for twelve months from date of receipt when stored at -20°C to -80°C.

Preservative-Free.

Sodium azide is recommended to avoid contamination (final concentration 0.05%-0.1%). It is toxic to cells and should be disposed of

properly. Avoid repeated freeze-thaw cycles.

Clonality

Polyclonal

Ig Type

Rabbit IgG

Applications

ELISA, WB

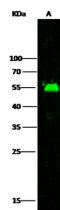
Dilutions

WB: 2-5 μ g/mL

ELISA: 0.1-0.2 μ g/mL

This antibody can be used at 0.1-0.2 μ g/mL with the appropriate secondary reagents to detect Human ADSL / Adenylosuccinate Lyase. The detection limit for Human ADSL / Adenylosuccinate Lyase is approximately 0.00975 ng/well.

Validations



Lanes	
Items	A
Sample (whole cell lysate)	HepG2
Sample Volume (μ g/lane)	30
Gel	13% SDS-PAGE reducing gel
Recommended Concentration	2-5 μ g/ml
Secondary Antibody	Dylight 800-labeled Antibody To Rabbit IgG (H+L), at 1:5000 dilution.

ADSL / Adenylosuccinate Lyase Antibody, Rabbit PAb, Antigen Affinity Purified, Western blot