

# Anti-CAPG / AFCP antibody



Catalog Number: 100600

## Product name

Anti-CAPG / AFCP antibody

## Immunogen

[Human CAPG / AFCP recombinant protein](#)

## Specificity

Human CAPG / AFCP

## Antibody description

Rabbit polyclonal to CAPG / AFCP

## Preparation

Produced in rabbits immunized with purified, recombinant Human CAPG / AFCP (rh CAPG / AFCP; AAH14549.1; Met1-Lys348). CAPG / AFCP specific IgG was purified by Human CAPG / AFCP affinity chromatography.

## Formulation

0.2  $\mu$ m filtered solution in PBS

## Storage

This antibody can be stored at 2°C-8°C for one month without detectable loss of activity. Antibody products are stable for twelve months from date of receipt when stored at -20°C to -80°C.

Preservative-Free.

Sodium azide is recommended to avoid contamination (final concentration 0.05%-0.1%). It is toxic to cells and should be disposed of properly. Avoid repeated freeze-thaw cycles.

## Clonality

Polyclonal

## Ig Type

Rabbit IgG

## Applications

ELISA, WB, IP

## Dilutions

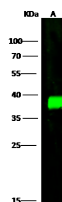
WB: 2-10  $\mu$ g/ml

ELISA: 0.1-0.2  $\mu$ g/mL

This antibody can be used at 0.1-0.2  $\mu$ g/mL with the appropriate secondary reagents to detect Human CAPG / AFCP. The detection limit for Human CAPG / AFCP is < 0.039 ng/well.

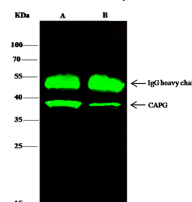
IP: 1-4  $\mu$ g/mg of lysate

## Validations



Lanes	A
Items	
Sample (whole cell lysate)	Hela
Sample Volume ( $\mu$ g/lane)	30
Gel	13% SDS-PAGE reducing gel
Recommended Concentration	2-10 $\mu$ g/ml
Secondary Antibody	Dylight 800 labeled Antibody to Rabbit IgG (H+L), at 1:5000 dilution.
Developed using Odyssey imaging system.	
Explanation	Predicted band size : 38 kDa Observed band size : 38 kDa

CAPG / AFCP Antibody, Rabbit PAb, Antigen Affinity Purified, Western blot



Lanes	A	B
Items		
Sample (whole cell lysate)	Hela	HepG2
Sample quantity	0.5 mg	
IP antibody quantity	2 $\mu$ g	
Protein G Agarose	15 $\mu$ l of 50% Protein G Agarose	
Gel	13% SDS-PAGE reducing gel	
Primary antibody	CAPG antibody at 3 $\mu$ g/ml	
Secondary antibody	Dylight 800-labeled antibody to rabbit IgG (H+L), at 1:5000 dilution	

CAPG / AFCP Antibody, Rabbit PAb, Antigen Affinity Purified, Immunoprecipitation